

Pressure
Temperature
Flow
Level Measurement
Gas Detector

Pressure instruments

General service pressure gauge

P110
EAC

Dial: 40, 50, 60, 75, 100, 150 and 200 mm
Range: -0.1~0.2, 0~100 MPa
Case: Black finished steel, Element: Brass, 316SS



Ammonia service pressure gauge

P111
EAC

Dial: 60, 75 and 100 mm
Range: -0.1~1, 1.5, 2 MPa
Case: Black finished steel, Element: 316SS



Bourdon tube pressure gauge

P112
EAC

Dial: 60 and 75 mm
Range: -0.1~2, 0~3.5 MPa
Case: Black finished steel, Element: Brass



Air regulator service pressure gauge fully stainless steel wetted parts

P113
EAC

Dial: 50 mm (2")
Range: 0~40 MPa
Case: Nickel plated steel, Element: 316L SS



General purpose pressure gauge

P140
EAC

Dial: 60 and 100 mm
Range: -0.1~0, 0~35 MPa
Case & cover: Polycarbonate, Element: Brass, 316SS



General service pressure gauge with economic design diaphragm seal

P170
EAC

Dial: 75 and 100 mm
Range: -0.1~0, 0~25 MPa
Case: Black finished steel, Element: 316L SS



Heavy duty service pressure gauge

P163
EAC

Dial: 80 mm
Range: -0.1~1, 1.5, 0~6 MPa
Case: Bronze, Element: Brass



Industrial service pressure gauge

P221
P253
EAC

Dial: 40 and 50 mm
Range: 0~0.2, 0.3, 0.4, 0.6, 1, 1.5, 3.5 MPa
Case: 304SS, Element: 316SS(P221)/Brass(P253)



Industrial service pressure gauge**P222**

ERC

Dial: 125 mm (4 1/2")
 Range: -0.1 ~ 0 to 0 ~ 200 MPa
 Case: 304SS, Element: 316SS

**Receiver gauge****P228**

ERC

Dial: 100 and 160 mm
 Range: 0 ~ 10% square root scale
 0 ~ 100% linear scale
 Case: 304SS, Element: 316SS

**Test pressure gauge****P229**

ERC CRN

Ex CE

Dial: 160 mm
 Range: -0.1 ~ 0 to 0 ~ 0.1 to 0 ~ 200 MPa
 Case: 304SS, Element: 316SS

**Miniature pressure gauge****P235S
P235B**

ERC

Dial: 35 mm
 Range: 0 ~ 0.2 MPa to 0 ~ 3.5 MPa
 Case: 304SS, Element: 316SS/Brass

**Test pressure gauge****P239**

ERC

Dial: 160 and 250 mm
 Range: 0 ~ 60 kPa to 0 ~ 100 MPa
 Case: 304SS/Black painted aluminium
 Element: 316SS

**Industrial service pressure gauge****P252**

ERC Ex CE CRN

Dial: 63, 80, 100 and 160 mm
 Range: -0.1 ~ 200 MPa
 Case: 304SS, Element: 316SS

**Industrial service pressure gauge****P253**

ERC Ex CE

Dial: 63, 100 and 160 mm
 Range: -0.1 ~ 0, 0 ~ 35 and 0 ~ 100 MPa
 Case: 304SS, Element: Brass

**General service liquid filled pressure gauge****P254**

ERC

Dial: 50, 63, 75 and 100 mm
 Range: -0.1 ~ 0, 0 ~ 40 MPa
 Case: 304SS, Element: Brass

**Crimped-on-ring case pressure gauge****P255**

ERC

Dial: 63, 80 and 100 mm
 Range: -0.1 ~ 0, 0 ~ 100 and 0 ~ 200 MPa
 Case: 304SS, Element: 304SS/316SS

**Safety pattern type overpressure protection pressure gauge****P256**

ERC

Dial: 100 and 160 mm
 Range: -0.1 ~ 0, 0 ~ 4 MPa
 Case: 304SS, Element: 316SS

**Safety pattern type pressure gauge****P257**

ERC CRN Ex CE

Dial: 63, 100 and 160 mm
 Range: -0.1 ~ 0, 0 ~ 100, 0 ~ 200 MPa
 Case: 304SS, Element: 316SS

**Liquid filled industrial pressure gauge****P258**

ERC Ex CE CRN

Dial: 63, 80, 100 and 160 mm
 Range: 0.1 ~ 200 MPa
 Case: 304SS, Element: 316SS

**Liquid filled pressure gauge****P259**

ERC Ex CE

Dial: 63, 100 and 160 mm
 Range: -0.1 ~ 0, 0 ~ 40, 0 ~ 100 MPa
 Case: 304SS, Element: Brass

**Process industry pressure gauge****P330
P335**

ERC Ex CE

Dial: 150 mm
 Range: -0.1 ~ 0, 0 ~ 200 MPa
 Case: Black painted aluminium alloy
 Element: 316SS

**Duplex pressure gauge****P336
P338**

ERC

Dial: 100 mm (P336), 110*110 mm (P338)
 Range: 0 ~ 0.4 to 0 ~ 3.5 MPa (P336)
 0 ~ 1 and 0 ~ 1.2 MPa (P338)
 Case: Black painted aluminium, Element: 316SS

**Draft gauge****P410
P420**

ERC

Dial: 192*96 mm (P type), 96*192 (R type)
 Range: 0 ~ 0.5 to 0 ~ 10 kPa
 Case: Black finished steel (P410), 304SS (P420)
 Element: 316L SS



Safety pattern type pressure gauge
Solid-front and turret style thermoplastic case

P359

ERC  CRN  CE

Dial: 125 mm (4 1/2")
Range: -0.1~0 to 0~200 MPa
Case: PBTB, Element: 316SS



Low pressure gauge

P421

ERC  CE

Dial: 100 and 150 mm
Range: -50~0, -1~35 kPa
Case: 304SS, Element: 316L SS



Low pressure gauge (Capsule system)

P422

ERC  CE

Dial: 63, 80, 100 and 160 mm
Range: -35~0.5 kPa, 0~2 kPa
Case: 304SS, Element: 316L SS



Diaphragm type low pressure gauge

**P428
P429**

ERC  CE

Dial: 100 and 150 mm
Range: -1~1, -35~35 kPa
Diaphragm: 316L SS,
Upper flange (Gauge side): 304SS, 316SS



Low pressure gauge with aluminium case

P430

ERC

Dial: 60 and 75 mm
Range: -0.1~2, 0~3.5 kPa
Case: Black finished aluminium
Element: 316L SS



Low pressure gauge with nickel plated steel case

P440

ERC

Dial: 63, 75 and 100 mm
Range: -50~15, -5~50 kPa
Case: Nickel plated steel/304SS
Element: Beryllium copper



Inductive contact type diaphragm pressure gauge

**P501
P502**

ERC 

Dial: 100 and 160 mm
Range: 0~1 to 0~40 kPa (Flange 150 mm)
0~50 kPa to 0~2.5 MPa (Flange 100 mm)
Case: 304SS, Upper flange: 304SS, 316SS



Inductive contact type pressure gauge

P500

ERC  CE

Dial: 100 and 160 mm
Range: -0.1~0, 0~200 MPa
Case: 304SS, Element: 316SS



Electrical contact type pressure gauge

P520

ERC  CE

Dial: 100 mm
Range: -0.1~0 to 0~200 MPa
Case: 304SS, Element: 316SS



Electrical contact type pressure gauge (Modular system)

P510

ERC  CE

Dial: 100 and 160 mm
Range: -0.1~0 to 0~200 MPa
Case: 304SS, Element: 316SS



Electrical contact pressure gauge with aluminium case

P530

ERC  CE

Dial: 100 and 150 mm
Range: -0.1~2, 0~100 MPa
Case: Black finished aluminium
Element: 316SS



Indicating type pressure switch

**P535
P536**

ERC  CE

Dial: 100 and 150 mm
Range: -0.1~2, 0~35 MPa
Case: ALDC 12.1, Element: 316SS



Electrical contact type pressure gauge with nickel plated zinc case

**P542
P543**

ERC

Dial: 100 and 150 mm
Range: -0.1~1 MPa
Case: Nickel plated zinc (P542)/316SS (P543)
Element: 316SS



Electrical contact type diaphragm pressure gauge

P570

ERC

Dial: 100 and 160 mm
Range: 0~40 kPa, 0~2.5 MPa
Case: 304SS, Upper flange: 304SS, 316SS



Density monitoring system

P580

ERC

Range: -0.1~0.1, -0.1~1.2 MPa
Case & Cover: 304SS, Element: 316SS
Display: Operating and alarm status LED



SF₆ gas density monitor

P590

ERC 

Dial: 100 mm
Range: 0.1~2 MPa at SF₆ gas pressure 20°C
Case: 304SS, Element: 316SS



Indicating type differential pressure switch with bellows element

P640

ERC 

Dial: 150 mm
Range: 0~25 MPa (P641), 0~2.0 MPa (P642)
Case & Cover: ALDC 12.1
Element: 316L SS, Monel and Hastelloy-C



Differential pressure gauge with electrical contact type

P650

ERC 

Dial:160 mm
Range:0~25 kPa, 0~2.0 MPa
Case:304SS
Element:316L SS, Monel and Hastelloy-C



Differential pressure gauge with diaphragm element

P660

ERC 

Dial:100 and 160 mm
Range:0~40 kPa, 0~2.5 MPa
Case & Cover:304SS
Element:316Ti, 316L SS



Differential pressure gauge with bellows element

P670

ERC 

Dial:100 and 160 mm
Range:0~10 kPa, 0~0.25 MPa, 0~2.0 MPa
Case & Cover:304SS
Element:316L SS, Monel & Hastelloy-C



Differential pressure gauge with reed switch

P680

ERC 

Dial:150 mm
Range:0~25 MPa, 0~2 MPa
Case & Cover:ALDC12.1
Element:316SS, Monel and Hastelloy-C



Differential pressure gauge with inductive contact type

P690

ERC 

Dial:160 mm
Range:0~0.25 MPa, 0~2 MPa
Case & Cover:304SS, Element:316L SS



Compact design diaphragm seal pressure gauge

P701

ERC

Range:-0.1~2.4 MPa, 0~25 MPa
Filling liquid:Silicone oil
Diaphragm:316L SS, Hastelloy-C, Tantalum, Monel
Under flange:316SS, 316L SS, Monel, Hastelloy-C



Diaphragm seal type pressure gauge for chlorination

P711

Upper flange, under flange:316LSS
Diaphragm:tantalum Dial:63, 80 to 100mm
Acid resistance painting
Adequate for Chlorine use



Diaphragm seal type pressure gauge

P711

Upper flange, under flange:PVC
Diaphragm:teflon
Range:-0.1~0, 0~1.5MPa
Adequate for Corrosive fluids use



Diaphragm seal type pressure gauge

**P710
P720
P730**

ERC 

Design:Internal diaphragm
Working temperature:Ambient -20~65°C, Max.100°C
Diaphragm:316L SS, Monel, Hastelloy-C, Titanium...
Certificates:ATEX Ex II GD c IIC TX



High temperature service pressure gauge

P740

ERC 

Filling liquid:Silicone oil
Temp:-20~65°C(Max.300°C)
Diaphragm:316L SS
Certificates:ATEX Ex II GD c IIC TX



Sanitary pressure gauge

P750

ERC 

Dial:63, 80 and 100 mm
Temp:-20~65°C(Max.121°C)
Diaphragm:316L SS, Body:316SS
Certificates:ATEX Ex II GD c IIC TX



Sanitary pressure gauge (3-A marking)

P752S

ERC 

Dial:50, 63, 80 and 100 mm
Range:-0.1~7 MPa
Case:304SS, Diaphragm:316L SS



Sanitary pressure gauge- Male connection (3-A marking)

P753S

ERC 

Dial:63 and 100 mm
Range:0~3.5 MPa
Case & cover:304SS
System filling:FDA certified



Flush diaphragm type pressure gauge

P757

ERC 

Dial:63, 80 and 100 mm
Temp:-20~65°C (Max.100°C)
Body:316SS, Diaphragm:316L SS
ATEX Ex II GD c IIC TX



Pressure gauge with diaphragm seal

**P761
P762
P763**

ERC

Design:Internal diaphragm
Range:-0.1~0.1 to -0.1~35 MPa
Diaphragm:316L SS, Monel, Hastelloy-C, Titanium, Tantalum, Nickel, Alloy20
Upper flange:304SS, 316SS



Diaphragm seal for Pressure Instrument

P790

Filling liquid:Silicone oil
Upper flange:304SS,316SS,Titanium,Monel
Diaphragm:316L SS,Hastelloy C-276,
Titanium,Tantalum,Monel



Diaphragm pressure gauge with dry type

P770

ERC   

Dial:100 and 160 mm
Range:0~50 kPa to 0~2.5 MPa
Case:304SS
Diaphragm:316Ti SS, Duratherm 600

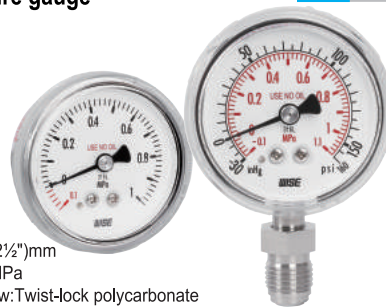


Ultra high purity pressure gauge

P810

ERC   

Dial:35(1½"), 50(2") and 63(2½")mm
Scale range:-0.1~0 to 0~28MPa
Case:304SS, Cover & window:Twist-lock polycarbonate

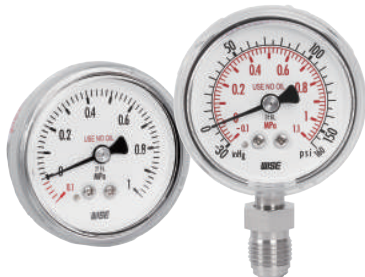


Ultra high purity pressure gauge (316L type, double melt)

P820

ERC   

Dial:50(2") and 63 mm (2½")
Range:-0.1~28 MPa
Case:304SS
ATEX Ex II GD c IIC TX

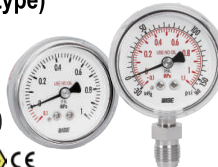


High purity pressure gauge (316L type)

P830

ERC   

Dial:35(1½"), 50(2") and 63 mm(2½")
Range:-0.1~0 to 0~28 MPa
Case:304SS, Element:316L SS
Certificates:ATEX Ex II GD c IIC TX



Ultra high purity pressure gauge

P840

ERC

Dial:50 mm (2")
Range:0~28 MPa
Case:304SS, Element:316L SS
Max.power:10 W/DC, 12 VA/AC



Ultra high purity pressure gauge with transmitter

PT840

ERC

Dial:50 mm (2")
Temp.:~40~65°C (Max.100°C)
Case:304SS, Element:316L SS



Ultra high purity pressure transmitter

PT850

Accuracy:±0.25% of full scale
Operating temperature range:-20~80 °C
Ex d IIC T6 / Ex ia IIC T6...T4 / Ex nA IIC T6...T4



Anti-corrosion pressure gauge

P870

ERC

Dial:50 mm
Range:0~0.1 to 0~1 MPa
Case & Cover:PP resin
Element:Bellows-Fluorine resin(PFA)



Low differential pressure gauge

P880

Dial:100 mm
Range:-0.25~0.25 kPa,0~50 kPa
Case & Cover:Gray painted aluminium die casting



Low differential pressure gauge

P960

Working temperature:
15~25 °C(Ambient),35 °C(Fluid,Max)



Pressure instruments

06 | 07

Union

A010



Material: Brass, 304SS, 316SS, 316L SS, 304L SS, PVC

Gauge union

A020



Material: 304SS, Monel, 316SS, 316L SS, Hastelloy-C

Syphon tube

A030

CRN

Body mat'l: 304SS, 316SS, 316LSS, 321SS, Hastelloy-C, Incoloy



Pulsation dampener

A040

CRN

Body material: 316SS, 316LSS, Monel



Snubber

A050

CRN

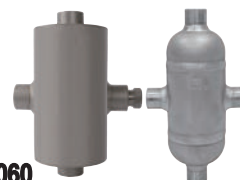
Body material: 316SS, 316LSS



Condensing pot

A060

Body mat'l: Carbon steel, 304SS, 316SS, 316LSS



Gauge protector

A070

CE CRN

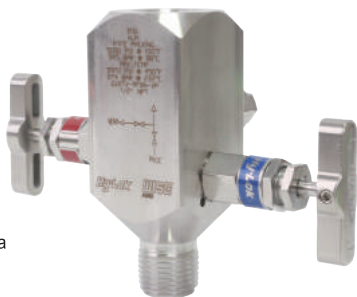
Material: 316SS, 316L SS, Monel, Hastelloy-C
Accuracy: $\pm 10\%$



Instrument valve

A080 CRN

Max.static pressure up to 41 MPa
Max.working temperature:232°C
Packing:PTFE (-54~232°C)



Instrument 3 and 5-way manifold valve

A080 CRN

Max.static pressure up to 41 MPa
Max.working temperature:240°C
Packing:PTFE (-54~232°C)



Sunshade

A090

SS230 (230 x 370 x 125), SS280 (280 x 350 x 125)
SS300 (300 x 350 x 170), SS400 (400 x 400 x 170)
SS410 (410 x 350 x 170)
Material(Sunshade):GRP, 304SS, 316SS, Carbon steel, ABS



Flushing Ring

A100

Material:304SS,304L SS,316SS,316L SS,
Monel,Hastelloy-C,Teflon,PVC



Temperature instruments

08 | 09

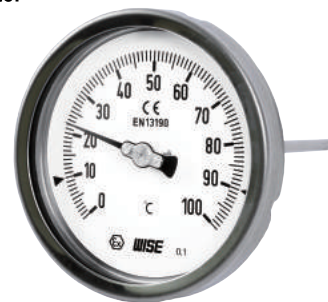
Industrial bimetal thermometer

T110

Center back conn. direct



Dial: 50, 65, 75, 100, 125 and 150 mm
Accuracy: $\pm 2.0\%$ of full scale
Case: 304SS, ATEX Ex II GD c IIC TX



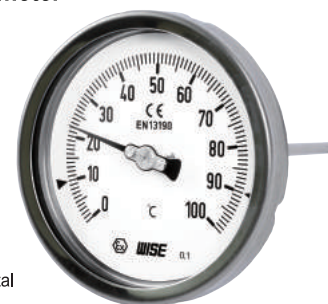
Industrial bimetal thermometer

T111

Center back conn. Direct



Dial: 75, 100, 125 and 150 mm
Accuracy: $\pm 2.0\%$ of full scale
Case: 304SS, Element: Coiled bimetal



Hermetically sealed case bimetal thermometer

T112

Center back conn. direct



Dial: 65, 75, 100, 125 and 150 mm
Accuracy: $\pm 2.0\%$ of full scale
Case: 316L SS, Element: Coiled bimetal



General service bimetal thermometer

T114

Center back conn. direct

Dial: 75 and 100 mm
Accuracy: $\pm 2.0\%$ of full scale
Case: Nickel plated steel
Element: Coiled bimetal



Process industry bimetal thermometer

T120

Bottom conn. direct



Dial: 75 and 100 mm
Accuracy: $\pm 2.0\%$ of full scale
Case: 304SS, Element: Coiled bimetal



Sanitary bimetal thermometer (3-A marking)

T123

Bottom conn. direct



Dial: 75 and 100 mm
Accuracy: $\pm 2.0\%$ of full scale
Case: 304SS, Element: Coiled bimetal



Process industry bimetal thermometer

T140

Center back with angle stem



Dial: 75, 100, 125 and 150 mm
Accuracy: $\pm 2.0\%$ of full scale
Case: 304SS, Element: Coiled bimetal



Hermetically sealed case bimetal thermometer

T191

Center back with adjustable stem



Dial: 75, 100, 125 and 150 mm
Accuracy: $\pm 2.0\%$ of full scale
Case: 316L SS, Element: Coiled bimetal



Bimetal thermometer

T150

Center back with adjustable stem,
Center back, Bottom

Dial: 80, 100 and 160 mm
Accuracy: $\pm 2.0\%$ of full scale
Case: 304SS, Element: Coiled bimetal



Process industry bimetal thermometer with adjustable stem

T190

Center back
with adjustable stem



Dial: 75, 100, 125 and 150 mm
Accuracy: $\pm 2.0\%$ of full scale
Case: 304SS, Adjustable on stem 90°
Element: Coiled bimetal



Remote reading thermometer

T210

Bottom conn., Surface, Case mounting
lower back conn., Flush, Case center mounting



Dial: 100 and 150 mm
Organic gas: 0~200°C, Inert gas: -200~700°C
Case & Cover: 304SS



Remote reading thermometer with aluminium case

T212

Bottom conn. Surface



Dial: 75, 100 and 150 mm
Organic gas: 0~200°C, Inert gas: -200~700°C
Case: Black finished aluminium, Capillary: 316SS



Remote reading thermometer with external mounting bracket on pipe and tanks

T213

Bottom Conn. Surface,
Case mounting

Dial: 100 and 150 mm
Organic gas: 0~200°C, Inert gas: -200~700°C
Case: 304SS, Capillary: 316SS



Liquid filled remote reading thermometer

T219

Bottom conn., Surface, Case mounting,
Lower back conn., Flush



Dial: 100 and 150 mm
Organic gas: 0~200°C, Inert gas: -200~700°C
Case & Cover: 304SS



Direct reading thermometer

T220

Bottom conn. Direct



Dial: 100 and 150 mm
Organic gas: 0~200°C, Inert gas: -200~700°C
Case & Cover: 304SS, Stem: 316L SS



Direct reading thermometer with aluminium case

T222

Bottom conn. Direct



Dial: 100 and 150 mm
Organic gas: 0~200°C, Inert gas: -200~700°C
Case & Cover: Black finished aluminium



Liquid filled direct reading thermometer

T229

Bottom conn., Direct,
Lower back conn.



Dial: 100 and 150 mm
Organic gas: 0~200°C, Inert gas: -200~700°C
Case & Cover: 304SS



Remote reading thermometer

T230

Bottom conn. Surface



Dial: 100 and 160 mm
Organic gas: 0~200°C, Inert gas: -200~700°C
Case & Cover: 304SS



Liquid filled remote reading thermometer

T239

Bottom conn., Surface



Dial: 100 and 160 mm
Organic gas: 0~200°C, Inert gas: -200~700°C
Case & Cover: 304SS, Armored tube: 304SS



Direct reading thermometer

T250

Bottom conn. Direct



Dial: 100 and 160 mm
Measuring system: 0~200 °C (Organic gas)
-200~700 °C (Inert gas)
Case & cover: 304SS



Liquid filled direct reading thermometer

T259

Bottom conn., Direct,
Lower back conn.



Dial: 100 and 160 mm
Organic gas: 0~200°C, Inert gas: -200~700°C
Case & cover: 304SS, Glycerin & silicone

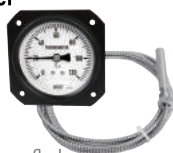


Heavy duty service remote reading thermometer

T263

Center back conn. flush,
Cover mounting

Dial: 80 mm
Organic gas: 0~200 °C
Case & cover: Black finished bronze



Direct reading thermometer with adjustable stem

T290

Lower back with adjustable stem

Dial: 100 and 150 mm
Organic gas: 0~200°C, Inert gas: -200~700°C
Case & cover: 304SS



Safety pattern type direct reading thermometer solid-front turret style thermoplastic case

T359

Bottom conn. direct



Dial: 125 mm, Case & cover: PBTB
Organic gas: 0~200°C, Inert gas: -200~700°C
ATEX Ex II GD c IIB TX



Safety pattern type remote reading thermometer solid-front turret style thermoplastic case

T360

Bottom conn. surface

Dial: 125 mm, Case & cover: PBTB
Organic gas: 0~200°C, Inert gas: -200~700°C



Glass thermometer

T400

Measuring system: 0~600 °C (Liquid filled)
Case: Aluminium alloy
Stem: Brass, 316SS and 316L SS



Inductive contact type temperature gauge

T500

Bottom conn. Surface,
Case mounting



Dial: 100 and 160 mm
Case & cover: 304SS
Organic gas: 0~200°C, Inert gas: -200~700°C



Inductive contact type temperature gauge

T510

Bottom conn. surface, Case mounting



Dial: 100 and 160 mm, Case & cover: 304SS
Organic gas: 0~200°C, Inert gas: -200~700°C



Electrical contact type temperature gauge

T520

Bottom conn. surface,
Case mounting



Dial: 100 mm, Case & cover: 304SS
Organic gas: 0~200°C, Inert gas: -200~700°C



Electrical contact type bimetal temperature gauge

T530

Bottom conn. surface,
Case mounting

Dial: 100 mm
Case & cover: 304SS
Element: Coiled bimetal



Remote reading aluminium case thermometer with electrical contact

T710

Bottom conn. surface
Lower back conn.

Dial: 100 and 150 mm
Organic gas: 0~200°C, Inert gas: -200~700°C
Case & cover: Black finished aluminium



Direct reading aluminium case thermometer with electrical contact

T720

Bottom conn. surface

Dial: 100 mm
Organic gas: 0~200°C, Inert gas: -200~700°C
Case & cover: Black finished aluminium



Bimetal thermometer with electrical contact

T750

Bottom conn. direct

Dial: 100 mm
Case & cover: 304SS
Element: Coiled bimetal



Remote reading thermometer with electrical contact

T760

Bottom conn. surface



Dial: 100 mm
Organic gas: 0~200°C, Inert gas: -200~700°C
Case & Cover: 304SS



Pressure & temperature transmitters

Circular connector pressure transmitter

**P115
P125**

0~0.5 to 0~500bar gauge/absolute
0~0.1 to 0~350bar gauge/absolute



Flying leads pressure transmitter

**P117
P127**

0~0.5 to 0~500bar gauge/absolute
0~0.1 to 0~350bar gauge/absolute



DIN connector pressure transmitter

**P116
P126**

0~0.5 to 0~500bar gauge/absolute
0~0.1 to 0~350bar gauge/absolute



General head pressure transmitter

**P118
P128**

0~0.5 to 0~500bar gauge/absolute
0~0.1 to 0~350bar gauge/absolute



Compact pressure transmitter

**P316
P326**

0~0.5 to 0~500bar gauge/absolute
0~0.1 to 0~350bar gauge/absolute



Explosion proof head pressure transmitter

**P119
P129**

0~0.5 to 0~500bar gauge/absolute
0~0.1 to 0~350bar gauge/absolute



Compact pressure transmitter

**P317
P327**

0~0.5 to 0~500bar gauge/absolute
0~0.1 to 0~350bar gauge/absolute



Sanitary pressure transmitter

P424

0~0.2 to 0~50bar gauge/absolute



Sanitary pressure transmitter



P425

0~0.2 to 0~50bar gauge/absolute

Sanitary pressure transmitter



P426

0~0.2 to 0~50bar gauge/absolute

Sanitary pressure transmitter



P428

0~0.2 to 0~50bar gauge/absolute

Flush diaphragm pressure transmitter



**P515
P525**

0~1 to 0~50bar gauge/absolute
0~0.1 to 0~35bar gauge/absolute

Flush diaphragm pressure transmitter



**P516
P526**

0~1 to 0~50bar gauge/absolute
0~0.1 to 0~35bar gauge/absolute

Flush diaphragm pressure transmitter



**P517
P527**

0~1 to 0~50bar gauge/absolute
0~0.1 to 0~35bar gauge/absolute

Flush diaphragm pressure transmitter



**P518
P528**

0~1 to 0~50bar gauge/absolute
0~0.1 to 0~35bar gauge/absolute

Pressure gauge with transmitter



P616

0~0.5 to 0~500bar gauge/absolute
0~0.1 to 0~350bar gauge/absolute

Compact pressure transmitter with local display



P624

0~0.1 to 350bar gauge/absolute

Explosion proof type pressure transmitter with local display



P700C

0~250mmH₂O to 70bar gauge/absolute

Explosion proof type pressure transmitter with local display



P700

0~0.1 to 0~350bar gauge/absolute

Pressure transmitter with digital switch



P800S

0~0.1 to 350bar gauge/absolute

Temperature transmitter



T156

Input:RTD
Output:4~20mA, DC

Temperature transmitter



T158

Input:RTD
Output:4~20mA, DC

Temperature transmitter



T159

Input:RTD
Output:4~20mA, DC

Temperature transmitter



T700

Input:RTD
Output:4~20mA, DC

Programmable Temperature transmitter



T900

Input:MULTI
Output:4~20mA, DC

Temperature transmitter



T990

Input:RTD
Output:4~20mA, DC

Submersible depth and level transmitter



L127

0~0.1 to 35bar gauge/absolute

Tank top mounted level transmitter



L72S

0~0.1 to 35bar gauge/absolute

Panel mounting digital indicator



GL-2L

Input: multi (RTD, Volt, TC, mA)
Output: 2 alarm, 4~20mA (optional)
Display: LED 4 digit

Explosion proof type local indicator



E100

Display: LED 4 digit

Differential Pressure Transmitter



SMT2001

Accuracy : $\pm 0.05\%$ ($\pm 0.075\%$, $\pm 0.1\%$) of calibrated span
Range limits : 0 ~ 100 MPa to 0 ~ 3 MPa
Measurement medium: Gas, Steam & Liquid
Output : 4 ~ 20 mA with HART protocol

Gauge pressure transmitter



SMT2002

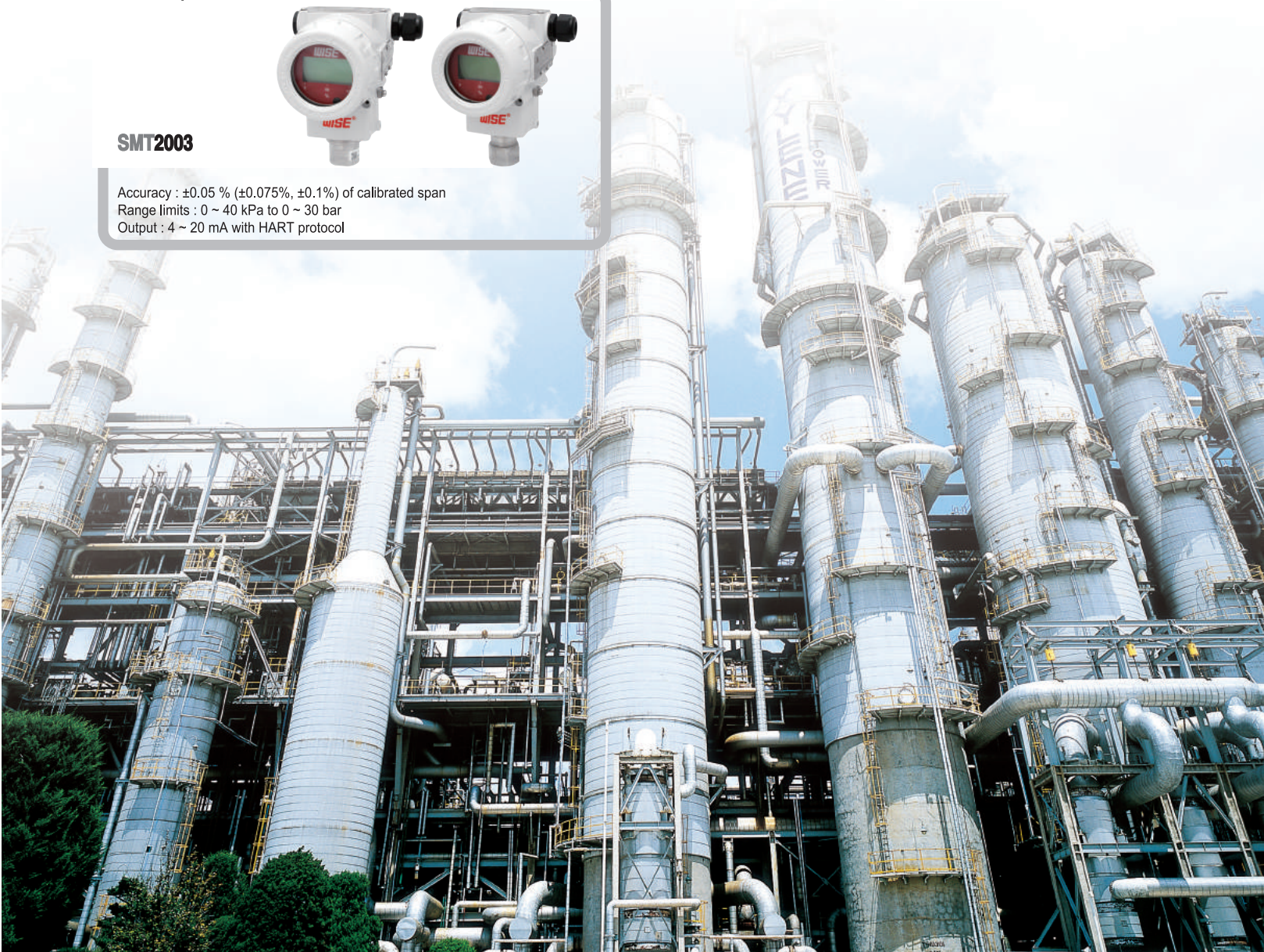
Accuracy : $\pm 0.05\%$ ($\pm 0.075\%$, $\pm 0.1\%$) of calibrated span
Range limits : 0 ~ 6 kPa to 0 ~ 40 MPa
Measurement medium: Gas, Steam and Liquid
Output : 4 ~ 20 mA with HART protocol

Absolute pressure transmitter



SMT2003

Accuracy : $\pm 0.05\%$ ($\pm 0.075\%$, $\pm 0.1\%$) of calibrated span
Range limits : 0 ~ 40 kPa to 0 ~ 30 bar
Output : 4 ~ 20 mA with HART protocol



Thermocouples R.T.D & thermowells

14 | 15

Metallic protection tube thermocouple

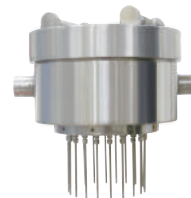


R110



Element: K, E, J, T
Head material: ALDC (Standard), 304SS, 316SS
Tolerances on temperature reading: Class 2

Cool-down and leak detector



R190

RL series



Junction box: 316SS, Element: Pt 100Ω at 0 °C
Temperature range: -200~100°C
Sheath material: 316L SS
KCS Ex d IIC T6

Sheathed thermocouple



R120

R series



Element: K, E, J, T, N
Head material: ALDC (Standard), 304SS, 316SS
Tolerances on temperature reading: Class 1, Class 2

Heavy duty type resistance temperature detector



R200

Element: Pt 100Ω at 0 °C
Head material: ALDC
Temperature range: -60~250 °C (Class A, B)
Sheath material: 316L SS

Metallic protection tube resistance temperature detector



R210



Element: Pt 100Ω at 0 °C
Tolerances on temperature reading: Class A, Class B
Head material: ALDC, 304SS, 316SS
Protecting tube outer diameter: 6.4, 8.0 and 10 mm

Sanitary resistance temperature detector



R230



Element: Pt 100Ω at 0 °C
Tolerances on temperature reading: Class A, Class B
Stem material: 304SS, 316SS
Head type: Weatherproof (304SS)

Sheathed type resistance temperature detector



R220

R series



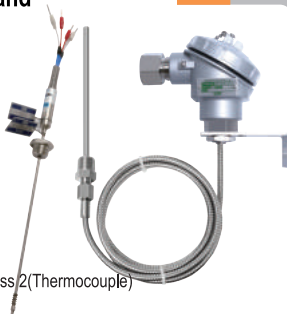
Element: RTD-Pt 100Ω at 0 °C
Head material: ALDC (Standard), 304SS, 316SS
Tolerance on temp. reading: Class A: $\pm (0.15 + 0.002 |t|)$, Class B: $\pm (0.3 + 0.005 |t|)$
KCS Ex d IIC T6

Extension lead wire thermocouple and resistance temperature detector

R300



Element: Thermocouple-K, E, J, T, N, R, S, B
/ RTD: Pt 100Ω at 0 °C
Tolerances on temperature reading: Class 1, Class 2 (Thermocouple)
Class A, Class B (RTD)



Resistance temperature detector for room and refrigerator

R430

Head: Aluminium casting
Element: Pt 100Ω at 0 °C
Working temperature: -50~200 °C



Multi point thermocouple and resistance temperature detector

R500

Element: Thermocouple-K, E, J, T, N
/ RTD: Pt 100Ω at 0 °C
Junction box material: Aluminium, Stainless steel



Tube skin thermocouple and resistance temperature detector

R600

Element: Thermocouple-K, E, J, T, N
/ RTD: Pt 100Ω at 0 °C
Head material: ALDC, 304SS, 316SS



Non-metallic protection tube thermocouple

R700

Element: R, S, B, K
Head material: ALDC, 304SS, 316SS
Tolerance on temperature reading: Class 2,3



Increased safety type stator winding RTD

**R810
R820
R830**



Body material: High temperature epoxy glass
Temperature limit: Class F: 155 °C (311 °F) / Class H: 180 °C (356 °F)
Working temperature: -50~180 °C
KCS Ex e IIC Gb, ATEX II 2G Ex e IIC Gb, IECEx Ex e IIC Gb



Coil end temperature detector and bearing temperature sensor

R840



Element: RTD_Pt 100Ω at 0 °C
ATEX II 2G Ex e IIC Gb
IECEx Ex e IIC Gb
ATEX II 1G Ex ia IIC T6...T3 Ga
IECEx Ex ia IIC T6...T3 Ga



Head mounting type multi temperature transmitter

**R911
R912 (With T990)**

Input: Multi (T900), RTD (T990)
Output: 4 20 mA, DC
KCS Ex d IIC T6



Explosion proof type Sheathed thermocouple and resistance temperature detector

**R921
R922**

RS series



Element: Thermocouple-K, E, J, T, N
/ RTD: Pt 100Ω at 0 °C
Head material: ALDC, 316SS
KCS Ex d IIC T6 IP65



Explosion proof Thermocouple and resistance temperature detector

R940

ETR series



Element: Thermocouple-K, E, J, T, N
/ RTD: Pt 100Ω at 0 °C
Head material: ALDC, 316SS
ATEX II 2G Ex d IIC T6 Gb, IECEx Ex d IIC T6 Gb



Intrinsic safety and increased safety type thermocouple and resistance temperature detector

R950

ETR10 series



Element: Thermocouple-K, E / RTD: Pt 100Ω at 0 °C
Ambient temperature: -40~65 °C (Ex ia/Ex e)
KCS Ex e IIC T6...T1, ATEX II 2G Ex e IIC T6...T1, IECEx Ex e IIC T6...T1 Gb,
KCS Ex ia IIC T6, ATEX II 1/2G Ex ia IIC T6...T1 Ga/Gb, IECEx Ex ia IIC T6...T1 Ga/Gb



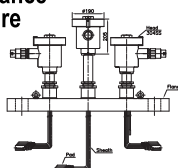
Explosion proof Multi point thermocouple and resistance temperature detector

R930

RC series



Element: Thermocouple-K, E, J, T, N
/ RTD: Pt 100Ω at 0 °C
Head material: Stainless steel, Aluminium
KCS Ex d IIC T6 IP67



Explosion proof Metallic protection tube thermocouple and RTD

R960



Element: Thermocouple-K, E, J, T, N
/ RTD: Pt 100Ω at 0 °C
Head material: ALDC, 316SS
KCS Ex d e IIC T6 IP67



Explosion proof Non-metallic protection tube thermocouple

R970



Element: R, S, B, K
Head material: ALDC (Standard), 316SS
KCS Ex d IIC T6 IP65



Chordal type thermocouple

R980

Boiler tube skin temperature
Element: K, E, J, T
Accuracy: Standard 0.75 %
Sheath outer diameter: 1.6, 2.3 and 3.2 mm



Sheet metal pad type thermocouple

R990

Boiler tube skin temperature
Element: K, E, J, T, N
Accuracy: Standard 0.75 %
Sheath outer diameter: 1.0, 1.6, 3.2 and 4.8 mm

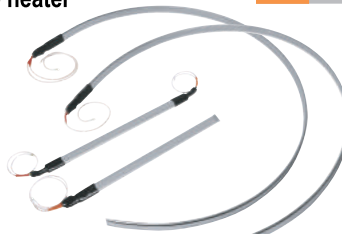


Explosion proof type space heater

H100



Heating element: Ni-Cr (Standard), Fe-Cr, Kantal
Tube material: 304SS, Ambient temperature: Tamb = -40~70 °C
KCS Ex e II, ATEX II 2G Ex e II Gb, IECEx Ex e IIC Gb



Field junction box

B500



Ambient temperature: -40~70 °C
ATEX (II 2G Ex d ia/id IIC T6 Gb
II 2G Ex e IIC T6 Gb, II 2D Ex tb IIIC T85 °C Db)
IECEX (Ex d ia/ib IIC T6 Gb,
Ex e IIC T6 Gb, Ex tb IIIC T85 °C Db)



Thermowells

Close end tube (pipe) type thermowell

**A500
A510**



Bar stock thermowells with thread connection

**A600
CRN**



Sanitary thermowell (3-A marking)

**A603
3-A**



Bar stock thermowell with flange connection

**A610
A611
A612
A623
CRN**



Bar stock thermowell with welded connection

**A630
A631
A632
CRN**



Vanstone typ thermowell

A640



Helical strake type thermowell

A650



Explosion proof type differential pressure switch

P970

953 series



Range: 15 kPa ~ 0.4 MPa

Working temperature: Ambient -40~65 °C (Fluid Max. 100 °C)

Element: 316L SS, Monel, Hastelloy-C and Viton

KCS Ex d IIC T6, ATEX II 2G Ex d IIC T6 Gb, IECEx Ex d IIC T6 Gb



Explosion proof type indicating pressure switch

P980



Dial: 100 mm

Range: -0.1~2 MPa, 0~35 MPa

Working temperature: -20~65 °C (Fluid Max. 100 °C)

Element: 316SS, Case and cover: ALDC 12.1, Silver gray painted aluminium



Explosion proof type indicating pressure switch

P990

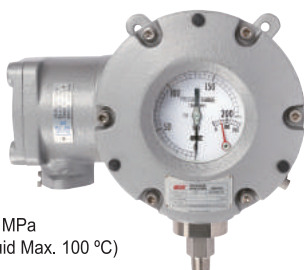


Dial: 125 mm

Adjustable range: -0.1~2 MPa, 0~40 MPa

Working temperature: -20~65 °C (Fluid Max. 100 °C)

KCS Ex d IIB+H2 T6



Temperature recorder

Case compensation system

T930

Case dimension: 246(W)x271(H)mm

Measuring system: 0~200 °C (Organic gas)

-200~700 °C (Inert gas)

Case and cover: ALDC



Indicating temperature switch

T931 T932

T931 (Case compensation system SAMA class IIIB)

T932 (Full compensation system SAMA class IIIA)

Dial: 150 mm

Measuring system: 0~200 °C (Only T932), -200~700 °C (Inert gas)

Case & Cover: Silver gray finished aluminium



Weatherproof temperature switch

T941 T942

Measuring system: 0~200 °C (Organic gas)

-200~700 °C (Inert gas)

Case and cover: Silver gray finished aluminium



Explosion proof temperature switch

T953

953 series



Measuring system: 0~200 °C (Organic gas)

-200~700 °C (Inert gas)

Case and cover: Silver gray finished aluminium



Explosion proof type indicating temperature switch

T990



Ambient temperature: -20~60 °C

Nominal diameter: 125 mm

KSC Ex d IIB+H2 T6



Flow elements & level gauges

Orifice Plate

F100



Line Size: 1/2B ~ 24B (DN15~DN600) or large size
Rating: ANSI 150 UP TO 2500#
Material: Plate - 316L SS & ETC

Orifice Plate with Ring

F200



Line Size: 1/2B ~ 24B (DN15~DN600)
Rating: ANSI 150 UP TO 600#
Material: Ring - 304SS, 316SS, Plate - 316LSS & ETC

Ring type Joint Orifice Plate

F300



Line Size: 1 1/2B ~ 24B (DN40~DN600)
Rating: 300# UP TO 2500#
Material: Ring Gasket & Plate - 316LSS & ETC

Restriction Orifice Plate

F400 EAC



Line Size: 1/2B ~ 24B (DN15~DN600) or large size
Rating: ANSI 150 UP TO 2500#
Material: Plate - 316LSS & ETC

Integral Orifice Assembly

F510 EAC CE



Line Size: 1/2B ~ 1-1/2B (DN15~DN40)
Rating: ANSI 150 UP TO 900#
Material: Flange - A182 F304, A182 F316/316L & ETC
Plate - 316LSS & ETC

Orifice Flange Assembly

F500 EAC CE



Line Size: 1/2B ~ 24B (DN15~DN600)
Rating: ANSI 150 UP TO 2500#
Material: Flange - A105, A182 F304, A182 F316/316L & ETC / Plate - 316LSS & ETC

Flow Nozzle

F600
EAC CE

Line Size: 2B ~ 24B (DN50~DN600) or large size
Rating: ANSI 150 UP TO 2500#
Material: Pipe - A106-B & ETC / Element - A182-F316/316L & ETC



Venturi Tube

F700
EAC CE

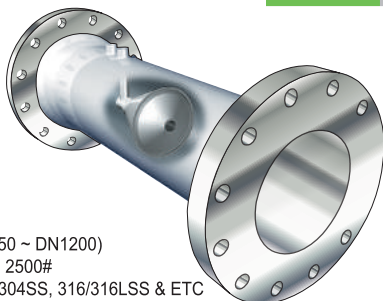
Line Size: 2B~48B (DN50 ~ DN1200)
Rating: ANSI 150 UP TO 2500#
Material: C.S, 304SS, 316/316LSS & ETC



Venturi Cone

F750
EAC CE

Line Size: 2B ~ 48B (DN50 ~ DN1200)
Rating: ANSI 150 UP TO 2500#
Material: Pipe - A106-B, 304SS, 316/316LSS & ETC
Element - 316/316LSS & ETC



Averaging pitot tube

F760
EAC

Line Size: 2B ~ 72B (DN50 ~ DN1800)
Rating: ANSI 150 UP TO 900#
Material: 304SS, 316/316LSS & ETC



Wedge Meter

F770
EAC

Line Size: 2B ~ 40B (DN50~DN1000)
Rating: ANSI 150#, 300#, 600#
Material: Pipe - A106-B, 304SS, 316/316LSS & ETC
Element - 316/316LSS & ETC



Glass Tube Flowmeter

F80X
F81X

Line Size: 1/2B ~ 8B (DN15~DN200)
Material: C.S, 304SS, 316SS
Max. Pressure: Max. 10 kg/cm².g
Max. Temperature: Max. 120 °C



Orifice Flowmeter

F820

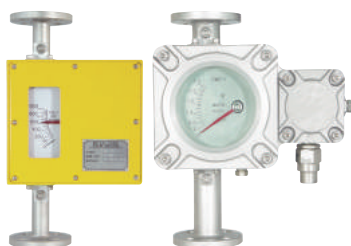
Line Size: 1/2B ~ 20B (DN15~DN500)
Material: C.S, 304SS, 316/316LSS & ETC
Max. Pressure: Max. 20 kg/cm².g
Max. Temperature: Max. 200 °C



Metal Tube Flowmeter

F82X

Line Size: 1/2B ~ 8B (DN15~DN200)
Material: 304SS, 316/316LSS & ETC
Max. Pressure: Max. 60 kg/cm².g
Max. Temperature: Max. 300 °C



Flow Switch and Sight Flowmeter

F850

Line Size: 1/2B ~ 20B (DN10 ~ DN500)
Material: 304SS, 316/316LSS & ETC
Max. Pressure: Max. 60 kg/cm².g
Max. Temperature: Max. 300 °C



Turbine Flowmeter

F901

Line Size: 3/8B ~ 10B (DN10 ~ DN250)
Material: 304SS, 316/316LSS & ETC
Max. Pressure: Max. 60 kg/cm².g
Max. Temperature: Max. 200 °C



See Through type Sight Glass

S100 seires

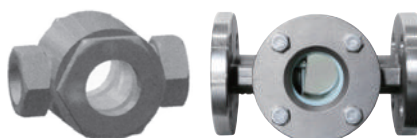
Line Size: 1/2B ~ 12B (DN15 ~ DN300)
Material: C.S, 304SS, 316/316LSS & ETC
Max. Pressure: UP TO 300#
Max. Temperature: 300 °C



Flapper type Sight Glass

S200 seires

Line Size: 1/2B ~ 12B (DN15 ~ DN300)
Material: C.S, 304SS, 316/316LSS & ETC
Max. Pressure: UP TO 300#
Max. Temperature: 300 °C



Ball type Sight Glass

S300 seires

Line Size: 1/2B ~ 12B (DN15 ~ DN300)
Material: C.S, 304SS, 316/316LSS & ETC
Max. Pressure: UP TO 300#
Max. Temperature: 150 °C



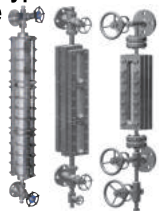
Reflex type Level Gauge



L100

Visible Length: 90 ~ 3,510mm
Material: C.S, 304SS, 316/316LSS & ETC
Max. Pressure: UP TO 300#
Max. Temperature: 0~200 °C

Transparent type Level Gauge



L200

Visible Length: 195 ~ 3,510mm
Material: C.S, 304SS, 316/316LSS & ETC
Max. Pressure: UP TO 300#
Max. Temperature: 0~320 °C

Magnetic Float type Level Gauge



L300

CE

Visible Length : 100 ~ 5,000mm
Material: 304SS, 316/316LSS, & ETC
Max. Pressure: UP TO 900#
Max. Temperature: 0~400 °C

Tubular type Level Gauge



L400

Visible Length : 100 ~ 4,000 mm
Material: C.S, 304SS, 316/316L SS & ETC
Max. Pressure: 3 barg
Max. Temperature: 100 °C

Two Color type Multi-port Level Gauge



L500

Visible Length: UP TO 2000mm
Material: C.S, 304SS, 316/316LSS & ETC
Max. Pressure: UP TO 900#
Max. Temperature: Saturated

Two Color type Transmitter Level Gauge



L510

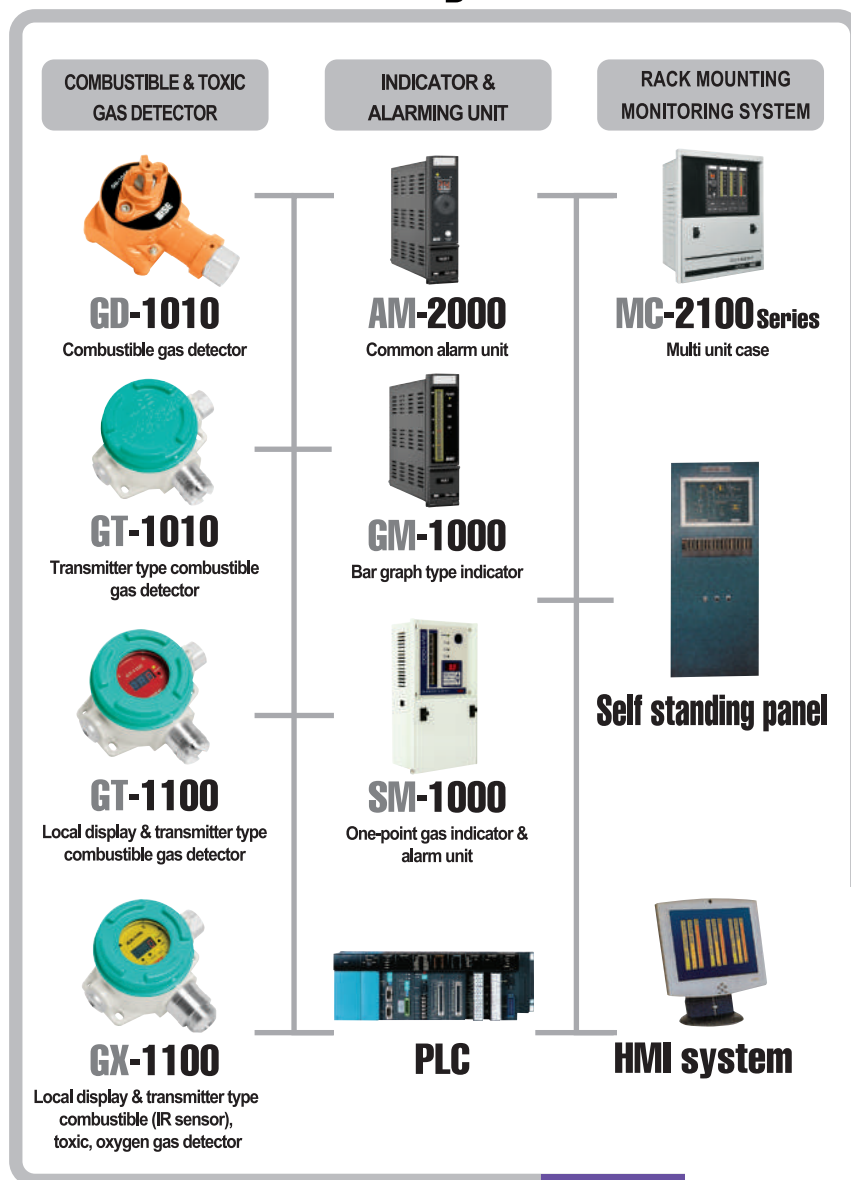
Visible Length: UP TO 2000mm
Material: C.S, 304SS, 316/316LSS & ETC
Max. Pressure: UP TO 2500#
Max. Temperature: Saturated



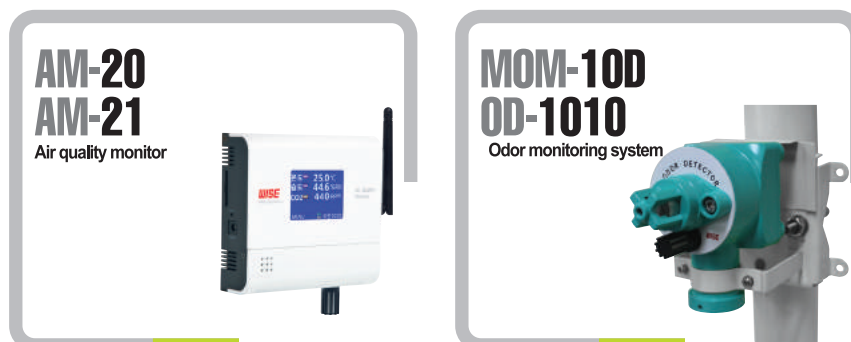
Gas detection system Environment product

22 | 23

Gas Detection System




Environment Products




















Certificate list

CERTIFICATE MARKING	CERTIFICATE NAME	ISSUE DATE	SCOPE OF CERTIFICATE	CERTIFIED BY
System Certificates				
	Quality Management System (ISO 9001 : 2015)	Aug. 27, 2018	Pressure Gauge, Switch, Transmitter, Temperature Gauge, Sensor, Switch, Transmitter, Level Gauge, Flow Element, Bellows	Korean Foundation for Quality
	Environment Management System (ISO 14001 : 2015)	Aug. 05, 2018	Pressure Gauge, Switch, Transmitter, Temperature Gauge, Sensor, Switch, Transmitter, Level Gauge, Flow Element, Bellows	Korean Foundation for Quality
	KEPIC Certificate - MN	Apr. 16, 2016	Class 1,2,3 Fabrication for Part & Appurtenances (Inclusion of Design Scope)	Korea Electric Association
	ASME Certificate mark with Designator "S", "U" & "PP"	Jul. 23, 2015	Flow Instrument	ASME
Pressure Instrument				
	KS Certificate (KS B 5305)	May. 24, 2012	Bourdon Tube Type Pressure Gauge	Korean Standards Association
	Explosion Proof Certificate - Flame Proof (Ex d IIC T6)	Oct. 04, 2018	UHP Pressure Transmitter [PT850]	KTL
	Explosion Proof Certificate - Intrinsic Safety (Ex ia IIC T6...T4 IP65)	Jan. 05, 2018	UHP Pressure Transmitter [PT851]	KOSHA
	Explosion Proof Certificate - Type of protection (Ex nA IIC T6...T4 IP65)	Sep. 05, 2017	UHP Pressure Transmitter [PT852]	KOSHA
	Explosion proof certificate - Flame proof (Ex d IIC T6)	Jan. 18, 2012	Diff. Pressure switch [P991]	KOSHA
	Explosion proof certificate - Flame proof (Ex d IIB+H2 T6)	Apr. 12, 2010	Pressure indicating switch [P990]	KOSHA
	Explosion Proof Certificate - Flame Proof (Ex d IIC T6 Gb)	Mar. 16, 2018	UHP Pressure Transmitter [PT850]	NEPSI
	Explosion Proof Certificate - Intrinsic Safety (Ex ia IIC T6...T4 Ga)	Mar. 16, 2018	UHP Pressure Transmitter [PT851]	NEPSI
	Explosion Proof Certificate - Type of protection (Ex nA IIC T6...T4 Gc)	Mar. 16, 2018	UHP Pressure Transmitter [PT852]	NEPSI
	Canadian registration number - Pressure equipment safety	May. 14, 2015	Pressure gauge [P229, P252, P257, P258, P721-1, P721-2] Pressure switch [P953-P2, P953-P3, P970]	ABSA
	Canadian registration number - Pressure equipment safety	Apr. 12, 2013	Pressure gauge [P252, P257, P359, P620, P711, P731], Accessories [A030, A040, A050, A070]	ABSA
	Canadian registration number - Pressure equipment safety	Apr. 11, 2012	Instrument valve - [A080]	ABSA
Temperature Instrument				
	Explosion Proof Certificate - Flame Proof (Ex d IIC T6)	Jun. 08, 2016	Explosion proof type Indicating Pressure Switch [P981, P982 Series]	KTL
	Explosion Proof Certificate - Flame Proof (Ex d IIC T6 IP65)	Apr. 07, 2016	Non-metallic protection tube thermocouple [R970 Series]	KGS
	Explosion Proof Certificate - Flame Proof (Ex de IIC T6 IP67)	Apr. 07, 2016	Metallic protection tube Thermocouple and RTD [R960 Series]	KGS
	Explosion Proof Certificate - Flame Proof (Ex d IIC T6)	Mar. 28, 2016	Head mounting type temperature transmitter (RTD Only) [R912]	KTL
	Explosion Proof Certificate - Flame Proof (Ex d IIC T6)	Mar. 28, 2016	Head mounting type multi temperature transmitter [R911]	KTL
	Explosion Proof Certificate - Flame Proof (Ex d IIC T6 IP65)	Mar. 23, 2016	Ultrasonic Gas Flow Meters [U111K]	KGS
	Explosion proof certificate - Intrinsic safety (Ex ia IIC T6...T3)	Aug. 06, 2015	Stator winding R.T.D - [R820 series : R821, R822, R823, R824, R825, R826, R827, R828]	KGS
	Explosion proof certificate - Increased safety (Ex e IIC T6...T1)	Apr. 24, 2015	Temperature sensor (Thermocouple and R.T.D) - [ETR 10 series]	KGS
	Explosion proof certificate - Intrinsic safety (Ex e IIC Gb)	Jan. 16, 2015	Stator winding R.T.D - [R810 series : R811, R812, R813, R814, R815, R816, R817, R818]	KGS
	Explosion proof certificate - Flame proof (Ex d IIC T6)	Oct. 28, 2014	Temperature sensor (Thermocouple and R.T.D) - [R Series : R121, R122, R221, R222]	KTL
	Explosion proof certificate - Flame proof (Ex d IIC T6 IP65)	Jul. 25, 2013	Multi-point temperature sensor [R550]	KOSHA
	Explosion proof certificate - Flame proof (Ex d IIC T6 IP65)	Jul. 25, 2013	Multi-point temperature sensor [R560]	KOSHA
	Explosion proof certificate - Increased safety (Ex e II)	May. 09, 2013	Space heater [H100]	KGS
	Explosion proof certificate - Flame proof (Ex d IIC T6 IP65)	Dec. 25, 2012	Temperature sensor (Thermocouple & R.T.D) - [RL Type : R190]	KGS
	Explosion proof certificate - Flame proof (Ex d IIC T6 IP67)	Aug. 01, 2012	Temperature sensor (Thermocouple and R.T.D) - [RC type: R931, R932, R933, R934]	KGS
	Explosion proof certificate - Flame proof (Ex d IIC T6 IP65)	Nov. 01, 2011	Temperature sensor (Thermocouple and R.T.D : Movable sheath type) - [RS type : R921, R922]	KGS
	Explosion proof certificate - Flame proof (Ex d IIB+H2 T6)	Jun. 07, 2011	Temperature indicating switch [T990]	KOSHA
	Explosion proof certificate - Intrinsic safety (Ex ia IIC T6)	May. 06, 2011	Temperature sensor (Thermocouple and R.T.D) - [ETR10 series : R951, R952]	KOSHA

CERTIFICATE MARKING	CERTIFICATE NAME	ISSUE DATE	SCOPE OF CERTIFICATE	CERTIFIED BY	
	Explosion Proof Certificate - Intrinsic Safety (IECEx Ex ia IIC T6..T3 Ga/Gb)	Dec. 08, 2017	Temperature sensor (Thermocouple & R.T.D) [R950(ETR10) Series]	DEKRA	
	Explosion Proof Certificate - Increased Safety (IECEx Ex e IIC Gb)	Nov. 21, 2017	Coil end temperature detector and Bearing temperature sensor [R840 Series]	LCIE	
	Explosion Proof Certificate - Intrinsic Safety (IECEx Ex ia IIC T6..T3 Ga)	Sep. 01, 2017	Bearing Temperature sensor [R840 Series]	Bureau Veritas	
	Explosion Proof Certificate - Flame Proof (IECEx Ex d IIC T6 Gb)	Jul. 24, 2017	Temperature sensor (Thermocouple & R.T.D) - [ETR Series : R941, R942]	LCIE	
	Explosion proof certificate - Increased safety (IECEx Ex e IIC T6...T1 Gb)	Jun. 06, 2016	Temperature sensor (Thermocouple and R.T.D) - [ETR10 series]	Bureau Veritas	
	Explosion proof certificate - Flame proof (IECEx Ex d IIC T6 Gb)	Dec. 07, 2015	Illuminator [A250]	Bureau Veritas	
	Explosion proof certificate - Flame proof / Intrinsic safety / Increased safety / Dust ignition proof (Ex d ia/ib [ia/ib] IIC T6 Gb) (Ex d e IIC T6 Gb) (Ex tb IIIC T85°C Db IP66/IP67)	Nov. 27, 2015	Field junction box [B500 series]	Bureau Veritas	
	Explosion proof certificate - Increased safety (IECEx Ex e IIC Gb)	Feb. 19, 2014	Space heater [H100]	Bureau Veritas	
	Explosion proof certificate - Intrinsic safety (IECEx Ex ia IIC T6..T1 Ga/Gb)	Sep. 19, 2016	Temperature sensor (Thermocouple and R.T.D) - [ETR10 series : R951, R952]	DEKRA	
	Explosion proof certificate - Increased safety (IECEx Ex e IIC Gb)	Nov. 04, 2013	Stator winding R.T.D - [R810 series : R811, R812, R813, R814, R815, R816,R817, R818]	Bureau Veritas	
	Explosion proof certificate - Intrinsic safety (IECEx Ex ia IIC T6...T3 Ga)	Nov. 04, 2013	Stator winding R.T.D - [R820 Series : R821, R822, R823, R824, R825, R826, R827, R828]	Bureau Veritas	
	Explosion proof certificate - Flame proof (IECEx Ex d IIC T6 Gb)	Sep. 20, 2011	Temperature sensor (Thermocouple and R.T.D) [ETR series : R941, R942]	KGS	
	Explosion Proof Certificate - Intrinsic Safety (ATEX Ex ia IIC T6..T3 Ga/Gb)	Dec. 08, 2017	Temperature sensor (Thermocouple & R.T.D) [R950(ETR10) Series]	DEKRA	
	Explosion Proof Certificate - Increased Safety (ATEX Ex e IIC Gb)	Nov. 21, 2017	Coil end temperature detector and Bearing temperature sensor) [R840 Series]	LCIE	
	Explosion Proof Certificate - Intrinsic Safety (ATEX Ex ia IIC T6...T3 Ga)	Aug. 31, 2017	Bearing Temperature sensor [R840 Series]	Bureau Veritas	
	Explosion Proof Certificate - Flame Proof (ATEX Ex d IIC T6 Gb)	Jul. 24, 2017	Temperature sensor (Thermocouple & R.T.D) [ETR Series : R941, R942]	LCIE	
	Explosion proof certificate - Increased safety (ATEX II 2G Ex e IIC T6...T1 Gb)	Jun. 03, 2016	Temperature sensor (Thermocouple and R.T.D) - [ETR10 series]	Bureau Veritas	
	Explosion proof certificate - Flame proof (ATEX Ex d IIC T6 Gb)	Dec. 07, 2015	Illuminator [A250]	Bureau Veritas	
	Explosion proof certificate - Flame proof / Intrinsic safety / Increased safety / Dust ignition proof (II (1)2G Ex d ia/ib [ia/ib] IIC T6 Gb) (II 2G Ex d e IIC T6 Gb) (II 2D Ex tb IIC T85 °C Db IP66/IP67)	Nov. 27, 2015	Field junction box [B500 series]	Bureau Veritas	
	Explosion proof certificate - Increased safety (ATEX II 2G Ex e IIC Gb)	Oct. 25, 2013	Stator winding R.T.D - [R810 series : R811, R812, R813, R814, R815, R816, R817, R818]	Bureau Veritas	
	Explosion proof certificate - Intrinsic safety (ATEX Ex ia IIC T6..T3 Ga)	Oct. 25, 2013	Stator winding R.T.D - [R820 Series : R821, R822, R823, R824, R825, R826, R827, R828]	Bureau Veritas	
	Explosion proof certificate - Increased safety (ATEX II 2G Ex e II Gb)	Jan. 08, 2013	Space heater [H100]	Bureau Veritas	
	Canadian registration number - Pressure equipment safety	Jul. 30, 2013	Thermowell [A600, A630, A631, A632, A610, A611, A612]	ABSA	
		Explosion Proof Certificate - Intrinsic Safety / Increased Safety R810(Ex e IIC Gb) R820(Ex ia IIC T6...T3 Ga) H100(Ex e IIC Gb)	Mar. 31, 2016	Stator Winding R.T.D [R810, R820 Series] SPACE HEATER [H100]	TECHNO STANDARD

Certificate list

CERTIFICATE MARKING	CERTIFICATE NAME	ISSUE DATE	SCOPE OF CERTIFICATE	CERTIFIED BY
Temperature Instrument				
	Explosion Proof Certificate - Intrinsic Safety (Ex ia IIC T6...T1 Ga/Gb)	Apr. 14, 2017	Temperature sensor (Thermocouple & R.T.D) - [R950(ETR10) Series]	NEPSI
	Explosion Proof Certificate - Increased Safety (Ex e IIC T6...T1 Gb)	Apr. 13, 2017	Temperature sensor (Thermocouple & R.T.D) - [R950(ETR10) Series]	NEPSI
Pressure and Temperature Instrument				
	Explosion Proof Certificate - Intrinsic Safety (Ex ia IIC T6)	Jul. 03, 2017	Inductive Contacts Type Pressure Gauge [P500, P501, P502, P690, T500, T510 Series]	KOSHA
	Explosion proof certificate - Flame proof (Ex d IIC T6 IP65)	Nov. 14, 2016	Pressure and Temperature switch - [953 series : P953, P970, T953]	KTL
	Explosion proof certificate - Flame proof (IECEx Ex d IIC T6 Gb)	Aug. 01, 2016	Pressure and Temperature switch - [953 series : P953, P970, T953]	LCIE
	Explosion proof certificate - Flame proof (ATEX Ex d IIC T6 Gb)	Jun. 15, 2016	Pressure and Temperature switch - [953 series : P953, P970, T953]	LCIE
	Explosion proof certificate - Constructional safety (ATEX Ex II GD c IIB TX)	May. 02, 2014	Pressure gauge [P359] Temperature gauge [T359]	Bureau Veritas
	Explosion proof certificate - Constructional safety (ATEX Ex II GD c IIC TX)	Apr. 11, 2014	Pressure gauge [P229, P252, P253, P257, P258, P259, P330, P335, P421, P422, P428, P429, P711, P712, P721, P722, P731, P732, P741, P742, P751, P752, P753, P754, P757, P771, P772, P810, P820, P830] Temperature gauge [T110, T111, T112, T120, T140, T190, T191, T359, T210, T212, T219, T220, T222, T229, T230, T239, T250, T259]	Bureau Veritas
	3-A Symbol certificate	Dec. 31, 2016	Sanitary pressure and Temperature gauges, Temperature sensor, Transmitters, Thermowell [P752, P753, PA126, PA127, T123, R231, R232, A603]	3-A Sanitary Standard, Inc.
		Feb. 27, 2015	Pressure Gauge (Diaphragm type) - P421, P422, P428, P710, P720, P730, P740, P751, P752, P753, P754, P755, P756, P770	ROSSTANDARD
		Feb. 27, 2015	Differential Pressure Gauge - P620, P640, P660, P670, P680, P690	
		Feb. 27, 2015	Pressure Gauge - P229, P235, P252, P253, P257, P258, P259, P330, P359, P500, P590, P810	
		Jan. 23, 2015	Temperature Gauge (T100) - T110, T120, T140, T190, T191	
		Dec. 19, 2014	Resistance Temperature Detector - R211, R212, R221, R222, R311, R312, R321, R322, R331, R332, R810, R820, R830, R921, R922, R941, R942, R951, R952	ROSSTANDARD
		Dec. 19, 2014	Temperature Gauge (T200) - T210, T212, T219, T220, T229, T230, T239, T250, T259, T521, T522, T523, T524, T525, T761, T762, T763, T764	
		Dec. 19, 2014	Thermocouple - R111, R112, R121, R122, R311, R312, R322, R331, R332, R921, R922, R941, R942, R951, R952	
	Explosion Proof Certificate - Flame Proof (Ex d IIC T6 Gb)	Mar. 10, 2017	Pressure & Temperature Switch [953 Series : P953, P970, T953]	NEPSI
	Explosion proof certificate - Intrinsic safety (Ex ia IIC T6 Ga)	Nov. 05, 2015	Pressure gauge [P500 series, P501 series, P690 series] Temperature [T500 series]	
Pressure, Temperature, Flow and Level Instrument				
	Pressure equipment directive (97/23/EC) Annex III Module H	Apr. 26, 2017	Pressure instrument [P252, P257, P258, P229, P359, P500, P510, P520, P531, P532, P533, P534, P537, P539, P535, P536, P710, P720, P740, P630, P631, P632, P633, P634, P635, P651, P652, P653, P654, P655], Pressure gauge accessories [A040, A070] Flow elements [F500, F510, F600, F700, F750] and Level instruments [L110, L210, L140, L240, L300, L310, L500, L510]	TUV NORD Systems GmbH & Co. KG
	TRCU (Technical Regulation of Customs Union)	Feb. 14, 2017	Orifice Plate - [F100, F200, F300, F400, F500, F510]	TECHNO STANDARD
		Jun. 09, 2016	Flow Element & Venturi Tube - [F600, F700, F750, F760, F770]	
		Apr. 07, 2016	Level Gauge	
		Mar. 21, 2016	Contact Gauge	
		Mar. 21, 2016	Pressure Gauge	
		Dec. 15, 2015	Thermowell	
		Dec. 03, 2015	Thermocouple & RTD	
		Dec. 03, 2015	Thermometer	
Flow and Level Instrument				
	Explosion proof certificate - Flame proof (KCS Ex d IIC T6 IP65)	Dec. 14, 2012	Illuminator [A250]	KGS
Gas Instrument				
	Explosion Proof Certificate - Flame Proof (Ex de IIC T6 IP65)	Jul. 26, 2018	Gas Detection Device [GLD1000]	KGS
	NEP (New Excellent Product)	Sep. 7, 2018	Gas Detection Device [GLD1000]	MINISTRY OF TRADE, INDUSTRY AND ENERGY

COUNTRY	COMPANY NAME	MARK	LOCATION	ITEM
KUWAIT	KOC (Kuwait Oil Company)		KUWAIT	PG,PS/TG,TW,TS
	KNPC (Kuwait National Petroleum Company)		KUWAIT	PG,PS/TG,TW,TS,RTD,TC,FS
KINGDOM OF SAUDI ARABIA	SABIC (SAUDI Basic Industry Corporation)		SAUDI ARABIA	PG,PS/TG,TS
	SEC (SAUDI Electricity Company)		SAUDI ARABIA	PG,PS/TG,TC,TS,TW/OF,FM,GG/GD,VT
	SWCC (Saline Water Conversion Corporation)		SAUDI ARABIA	TG,RTD,TW,PG
BAHRAIN	EWAB (Electricity & Water Authority of BAHRAIN)		BAHRAIN	PG,PS,TG,TC,TW,TS,RTD,LG,GG,FM,VT,OP,OF,GD,FD
U.A.E	ADWEA (ABU DHABI Water & Electricity Authority)		ABU DHABI	PG,PS,PT,TG,TT,TC,RTD,TW/OP,OF,FM,FS,FN,LG,LT,LS
	ADGAS (ABU DHABI Gas Liquefaction Company)		ABU DHABI	PG,PS,TG,TT,TC,RTD,TW/OP,OF,FM,FS,FN,VT/LG,GG,SG
	ADNOC (ABU DHABI National Oil Company)		ABU DHABI	PG,PS,PT,TG,TT,TC,RTD,TW/OP,OF,FM,FS,FN,VT/LG,LT,LS,SG
	GASCO (ABU DHABI Gas Industries Limited)		ABU DHABI	PG,PS,PT,TG,TT,TC,RTD,TW/OP,OF,FM,FS,FN,VT/LG,GG,LT,LS,SG
	TAKREER (ABU DHABI Refining Company)		ABU DHABI	PG,PS,TG,TC,RTD,TW,FM,VT/LG,SG
QATAR	QATAR PETROLEUM		QATAR	PG,TG,RTD,TC,TW,LG,FE
THAILAND	PTT (Petroleum Authority of THAILAND)		THAILAND	PG/TG
	IRPC (IRPC Public Company Limited)		THAILAND	PG/TG,TC,TW,RTD
IRAN	NIGC (National Iranian Gas Company)		IRAN	PG,TG,RTD,TC,TW,PT,TT,PS,TS,LS
MALAYSIA	PETRONAS		MALAYSIA	PG,DPG,TG,TS,SG,PS,FE,OP,VT,FN,LG,TW,TC,RTD
TAIWAN	CTCI		TAIWAN	PG,TG,PS,TS,PT,TT,FM,OF,LG,NZ,VT,SG,RTD,TC,TW,VALVE,MULTI/SKIN TC,GAS DETECTOR,BELLOWS

Organization

COMPANY NAME	ADDRESS
HEAD OFFICE	(18503) 서울특별시 금천구 가산디지털1로 181 (가산동, 가산 W CENTER) 19층 19F, 181, Gasan digital 1-ro, Geumcheon-gu, Seoul, Republic of Korea Tel. 82-2-300-2300 Fax. 82-2-300-2301 http://www.wisecontrol.com
YONGIN PLANT	(17097) 경기도 용인시 기흥구 덕영대로 2022 2022, Deogyong-daero, Giheung-gu, Yongin-si, Gyeonggi-do, 17097, Republic of Korea Tel. 82-31-280-5000 Fax. 82-31-283-9800 PRODUCT. Pressure & Temperature instruments
PAJU PLANT	(10858) 경기도 파주시 탄현면 한록산길 149 149, Hanroksan-gil, Tanhyeon-myeon, Paju-si, Gyeonggi-do, 10858, Republic of Korea Tel. 82-32-328-1571 Fax. 82-32-328-6530 PRODUCT. Power transmission line hardware
BUCHEON PLANT	(14556) 경기도 부천시 소사구 조마루로385번길 122, 12층 122, Jomaru-ro 385beon-gil, Bucheon-si, Gyeonggi-do, Republic of Korea Tel. 82-32-351-5751~53 Fax. 82-32-351-5754 PRODUCT. General Service Pressure gauge
HWASEONG PLANT	(18542) 경기도 화성시 마도면 마도공단로 4길 5 5, Madogongdan-ro 4-gil, Mado-myon, Hwaseong-si, Gyeonggi-do, 18542, Republic of Korea Tel. 82-31-366-9237 Fax. 82-31-366-9238 PRODUCT. Level Gauge & Flow Elements



For more than 54 years, the name WISE has been standing for innovation and quality in the field of Pressure, Temperature, Flow, Level and Gas measurement. WISE is comprised of several products divisions, state-of-the art manufacturing facilities, service center and over 60 distributors worldwide.

WISE is a unique organization of individuals linked by the pursuit of excellence in product design, manufacture, service and distribution. Major markets are served by WISE including the power generating industry, oil & gas, petrochemical and chemical processing, the pulp & paper industry, semiconductor manufacturing, the metallurgical industry, biopharmaceutical and food & beverage industry. WISE will continue its efforts to make WISE products an integral part of the development plans of its customers.

The new and exciting challenges will be met by building on a successful part rooted in recognizing and responding to customer needs, designing and producing quality products to meet those needs, proving premier customer service, and building a strong & lasting business relationship.

WISE[®] WISE Control Inc.
www.wisecontrol.com