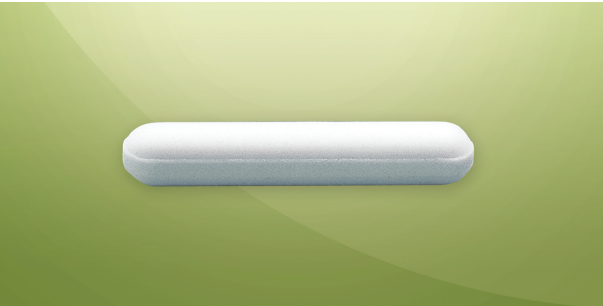


- ▶ Octagonal Shaped, Magnetic Stir Bar 팔면체형 마그네틱 바  
PTFE Coated / 내열온도 : -200~280℃ \*Cowie



Model	Size	Price : EA
OS-8013	Ø8 × L13mm	
OS-8015	Ø8 × L15mm	
OS-8022	Ø8 × L22mm	
OS-8025	Ø8 × L25mm	
OS-8028	Ø8 × L28mm	
OS-8038	Ø8 × L38mm	
OS-8041	Ø8 × L41mm	
OS-8051	Ø8 × L51mm	
OS-1051	Ø10 × L51mm	
OS-1064	Ø10 × L64mm	
OS-1375	Ø13 × L75mm	
OS-2418	Ø24 × L108mm	

- ▶ Plain type, Magnetic Stir Bar PTFE Coated 타원형 마그네틱 바  
PTFE Coated / 내열온도 : -200~280℃ \*Cowie

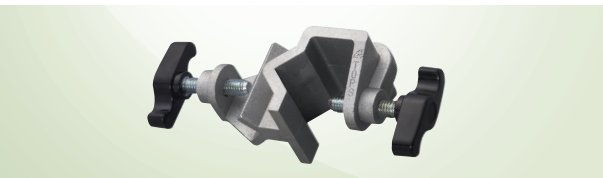


Model	Size	Price : EA
PS-6010	Ø6 × L10mm	
PS-4515	Ø4.5 × L15mm	
PS-7020	Ø7 × L20mm	
PS-8025	Ø8 × L25mm	
PS-7030	Ø7 × L30mm	
PS-7035	Ø7 × L35mm	
PS-8040	Ø8 × L40mm	
PS-8050	Ø8 × L50mm	
PS-1060	Ø10 × L60mm	
PS-1070	Ø10 × L70mm	
PS-1080	Ø10 × L80mm	
PS-2718	Ø27 × L108mm	

- ▶ Egg Shaped, Magnetic Stir Bar 에그형 마그네틱 바  
PTFE Coated / 내열온도 : -200~280℃ \*Cowie



Model	Size	Price : EA
ES-5010	Ø5 × L10mm	
ES-6015	Ø6 × L15mm	
ES-1020	Ø10 × L20mm	
ES-1025	Ø10 × L25mm	
ES-1630	Ø16 × L30mm	
ES-1635	Ø16 × L35mm	
ES-2040	Ø20 × L40mm	
ES-2050	Ø20 × L50mm	
ES-2064	Ø20 × L64mm	
ES-2070	Ø20 × L70mm	



- ▶ Clamp Holder : CH320
  - Clamping range : stand 13~30mm
  - Clamping range : extension arm 8~20mm
  - Material : cast aluminium

Price



- ▶ Clamp Holder : CH130
  - Ø 12,7mm 사용가능

Price



- ▶ Clamp : CS30
  - length : 210mm
  - Max. Ø 30mm 이내에 사용가능

Price



- ▶ Support Rod : SR40
  - Diameter : Ø 12,7mm
  - length : 400mm
  - Material : Stainless Steel

Price