

# Anti-corrosion pressure gauge

## Model: P870 series

Spec. sheet no. PD08-07

### Service intended

P870 series provide a superior chemical resistant and non-viscous pressure gauge which employs fluorine resin for the wetted parts. It can be used with highly corrosive fluids. The case material is PP resin and resistance to corrosive environments.

EAC

### Nominal diameter

50 mm

### Accuracy

±1.5 % of full scale (Only available with 0.6 and 1 MPa)  
±2.0 % of full scale

### Scale range (MPa, kPa, bar)

0 ~ 0.1 MPa to 0 ~ 1 MPa

### Working pressure

Steady pressure : 75 % of full scale

### Working temperature limits

Ambient : 10 ~ 30 °C

### Fluid

Max. 150 °C

### Temperature effect

Accuracy at temperature above and below the reference temperature (20 °C) will be effected by approximately ±0.8 % per 10 °C of full scale



## Standard features

### Pressure connection

Fluorine resin (PTFE, PFA)

### Dial

White aluminium with black graduations

### Element

Bellows : Fluorine resin (PFA)

### Pointer

Black painted aluminium alloy

### Case and cover

PP resin

### Process connection

3/8" PT, PF, tube (please consult about other connection)

### Window

Screw type PET resin

### Treatment

Assembly and adjustment : Clean room (Class 10,000)  
Treatment : Use no oil and water  
Packing : after N<sub>2</sub> gas flushing, clean polyethylene hermetical sealed packaging

### Movement

Brass

**WISE**<sup>®</sup>

I P870\_01

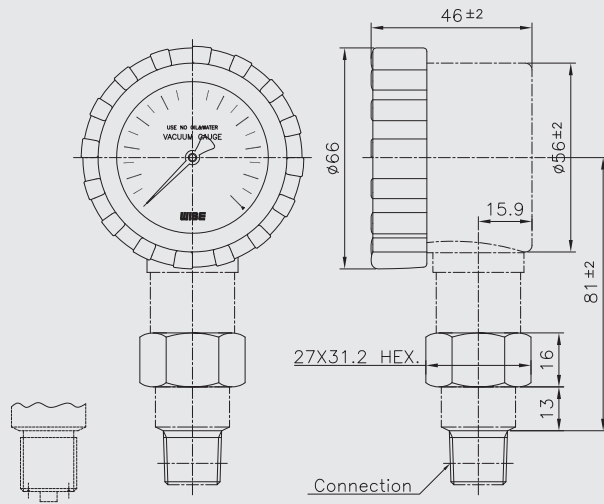
**1. Base model****P870** Anti-corrosion pressure gauge**2. Nominal diameter****1** 50 mm**3. Type of mounting****A** Bottom connection, direct**4. Accuracy****4** ±1.5 % of full scale (Only available with 0.6 and 1 MPa)**5** ±2.0 % of full scale**5. Connection type****D3** PF 3/8"**D8** PT 3/8"**TA** Tube 1/4" x 5/32"**TB** Tube 3/8" x 1/4"**TC** Tube 1/2" x 3/8"**TN** Tube 6 mm x 4 mm**TM** Tube 8 mm x 6 mm**EE** 1/2" UNF**6. Unit****H** bar**I** MPa**J** kPa**7. Range****XXX** Refer to pressure range table**8. Dial color****3** 2 colors**9. Option****0** None**1** Accessories

1	2	3	4	5	6	7	8
P870	1	A	4	D8	XXX	4	0

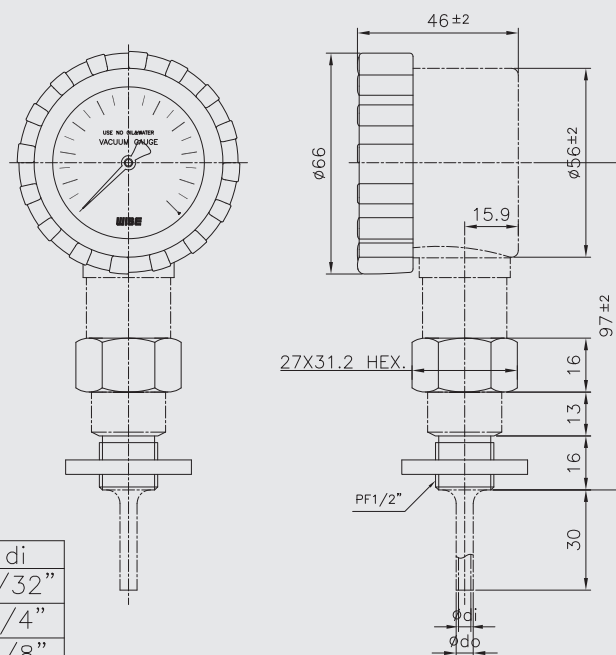
Sample  
ordering code

## P870 : Type of mounting

Code : D



Code : T



Code NO.	do	di
TA	1/4"	5/32"
TB	3/8"	1/4"
TC	1/2"	3/8"
TN	6	4
TM	8	6

## Pressure unit and range table

Range and code	Unit and code			Accuracy
	H : bar	I : MPa	J : kPa	
026	-1 ~ 0	-0.1 ~ 0	-100 ~ 0	2.0 %
041	0 ~ 1	0 ~ 0.1	0 ~ 100	
042	0 ~ 2	0 ~ 0.2	0 ~ 200	
044	0 ~ 4	0 ~ 0.4	0 ~ 400	
045	0 ~ 6	0 ~ 0.6	0 ~ 600	1.5 %
047	0 ~ 10	0 ~ 1	0 ~ 1,000	