

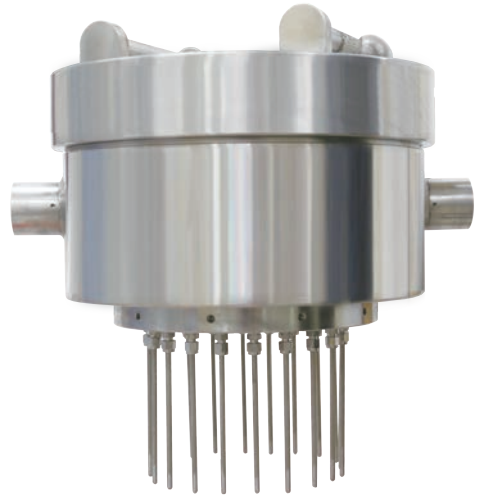
# Cool-down and leak detector

## Model : R190 (RL series)

Spec. sheet no. RD01-03

### Service intended

R190 series are explosion proof temperature sensors with a high accuracy and a high reliability for cryogenic industries such as LNG tank terminal and oxygen generator. The temperature sensors are available as RTD depending on the usage, and it can be designed according to user's request. Furthermore, these sensors can be manufactured according to the requested specification of flange or thread for required measuring points.



### Standard features

**Junction box**  
316SS

**Temperature range**  
-200 ~ 100 °C

**Element**  
Pt 100Ω at 0°C

**Maximum measuring points**  
15 points

**Sheath material**  
316L SS

**Tolerances on temperature reading**  
Class A :  $\pm (0.15 + 0.002 | t |)$   
Class B :  $\pm (0.3 + 0.005 | t |)$

**Sheath outer diameter**  
3.2, 4.8 and 6.4 mm

**Certificates**  
KCS Ex d IIC T6

## Main order

## Ordering information

### 1. Base model

**R190** Cool-down and leak detector

### 2. Junction box

**H** Explosion proof type  
**Z** Other

### 3. Element (Tolerance)

**Q** Pt 100Ω (B)  
**9** Pt 100Ω (A)

### 4. Sheath material

**1** 316L SS  
**9** Other

### 5. Sheath outer diameter (mm)

**D** 3.2  
**E** 4.8  
**F** 6.4

### 6. Measuring point

**01** 1  
**02** 2  
**03** 3  
**04** 4  
**05** 5  
**06** 6  
**07** 7  
**08** 8  
**09** 9  
**10** 10  
**11** 11  
**12** 12  
**13** 13  
**14** 14  
**15** 15

### 7. Conduit connection

**1** ½" PF  
**2** ½" PT  
**3** ½" NPT  
**4** ¾" PF  
**5** ¾" PT  
**6** ¾" NPT  
**7** None  
**8** M20 x 1.5P  
**9** Other

### 8. Connection type

**XX** Refer to insert length table (12<sup>th</sup> and 13<sup>th</sup> character)

### 9. Insert length

**X** Refer to insert length table (14<sup>th</sup> character)

### 10. Option

**0** None  
**1** Accessories

1	2	3	4	5	6	7	8	9	10
R190	H	Q	1	F	12	1	XX	X	1

Sample  
ordering code

### Mounting, connection type and insert length table - 12<sup>th</sup> thru 14<sup>th</sup> characters

12 <sup>th</sup> character		13 <sup>th</sup> character		14 <sup>th</sup> character	
Code	Connection size and connector material	Code	Connection type	Code	Insert length (m)
A	None	A	None	A	2
B	1/8" and 304SS	B	PT	B	3
C	1/4" and 304SS	C	NPT	C	4
D	3/8" and 304SS	D	PF	D	5
E	1/2" and 304SS	E	NPS	E	6
F	3/4" and 304SS	F	UNF	F	7
G	1" and 304SS	G	BSPT	G	8
H	1 1/4" and 304SS	H	BSPF	H	9
J	1 1/2" and 304SS	J	MM	J	10
K	2" and 304SS	K	B16.5 Class 150 RF	K	15
L	3" and 304SS	L	B16.5 Class 150 FF	L	20
M	7/16" and 304SS	M	B16.5 Class 300 RF	M	25
N	1/8" and 316SS	N	B16.5 Class 300 FF	N	30
P	1/4" and 316SS	O	Sanitary	P	35
Q	3/8" and 316SS	P	B16.5 Class 600 RF	Q	40
R	1/2" and 316SS	Q	B16.5 Class 600 FF	R	45
S	3/4" and 316SS	R	JIS 5K RF	S	50
T	1" and 316SS	S	JIS 5K FF	Z	Other
U	1 1/4" and 316SS	T	JIS 10K RF		
V	1 1/2" and 316SS	U	JIS 10K FF		
W	2" and 316SS	V	JIS 20K RF		
X	3" and 316SS	W	JIS 20K FF		
Y	7/16" and 316SS	X	B16.5 Class 1,500 RTJ		
Z	Other	Y	B16.5 Class 2,500 RTJ		
		Z	Other		

■ Note for 14<sup>th</sup> character, please choose a code of next higher length if applicable length is not. Actual length shall be specified.

R190 : Standard product drawing

