

# Ring Diaphragm Type Pressure Gauge

Model No. **SS-3037 Series**

**KINS**



**SS-3037**

[Patent application] 10- 2002-0004393

## Summary

This gauge is designed to measure various fluid's pressure flowing in a pipe effectively and accurately. It also has corrosive resistance and heat resistance. We complemented the imported goods' disadvantages. Therefore, it does not get affected by the direction of the installation and we can move it as we want to after the installation.

### Safety Management

- Be sure to install a protecting device where exist abrupt change of pressure, vibration and pulsation.
- Do not give impact during the transportation, installation and usage.
- Be sure to install pressure gauge to be horizontal and vertical.

### Purpose of Use

- Oil pressure line
- Chemical industry, power plant
- Sanitary
- Waste water treatment line, pulp and paper line, etc.

### Production Specification

- ▶ **Diameter**
  - 100 mm, 150 mm
- ▶ **Accuracy**
  - $\pm 1.0\%$  of Full Scale
- ▶ **Scale Range**
  - $-0.1 \text{ MPa} \sim 0$ ,  $-0.1 \text{ MPa} \sim 2 \text{ MPa}$ ,  $0 \sim 2 \text{ MPa}$
  - (※  $1 \text{ MPa} = 10.19716 \text{ kgf/cm}^2$ )
- ▶ **Working Pressure**
  - Static pressure : 75% of Full Scale
  - Fluctuating pressure : 60% of Full Scale
- ▶ **Working Temperature**
  - Ambient :  $-5 \sim 40^\circ\text{C}$
  - Fluid :  $-10 \sim 60^\circ\text{C}$

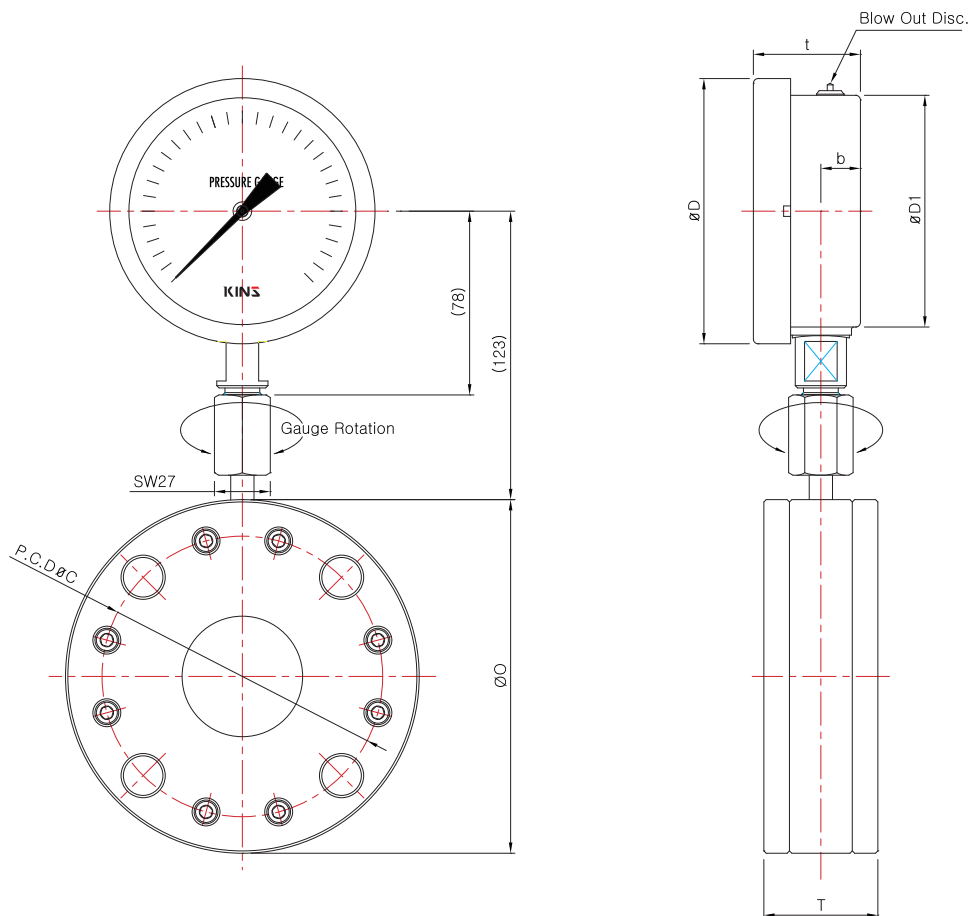
### Product Specification

- |   |   |  |
|---|---|--|
| + <b>Case &amp; Cover</b> <ul style="list-style-type: none"><li>· STS 304</li></ul>                                     | + <b>Pointer</b> <ul style="list-style-type: none"><li>· Aluminum</li><li>· Black coating</li></ul>   | + <b>Element</b> <ul style="list-style-type: none"><li>· STS 304</li><li>· C type bourdon tube</li></ul> |
| + <b>Body Flange</b> <ul style="list-style-type: none"><li>· STS 304, STS 316</li></ul>                                 | + <b>Dial</b> <ul style="list-style-type: none"><li>· Aluminum</li><li>· White color coating</li><li>· Black gradation and characters</li></ul> | + <b>Diaphragm</b> <ul style="list-style-type: none"><li>· Viton</li></ul>                               |
| + <b>Side Flange</b> <ul style="list-style-type: none"><li>· STS 304, STS 316, C-PVC</li></ul>                          |   |  |
| + <b>Window</b> <ul style="list-style-type: none"><li>· Tempered safety glass,</li><li>Laminated safety glass</li></ul> | + <b>Movement</b> <ul style="list-style-type: none"><li>· STS 304</li></ul>   |  |

# Ring Diaphragm Type Pressure Gauge

Model No. **SS-3037 Series**

Model No. | **SS-3037 (100mm)**  
A-Type (Rimless type)



## Dimensions (mm)

Model No.	ØD	ØD1	b	ANSI CLASS #150	ØO	P.C.D ØC	t (STS304, STS316)	t (CPVC)
SS-3037	114	100	17	1B	108	79,4	49	54
				1 1/2B	127	98,4		
				2B	152	120,6		
				2 1/2B	178	139,7		
				3B	191	152,4		
				4B	229	190,5		
				5B	254	215,9		
				6B	279	241,3		
				8B	343	298		

\*( )The measurement in the blanket is approximate.