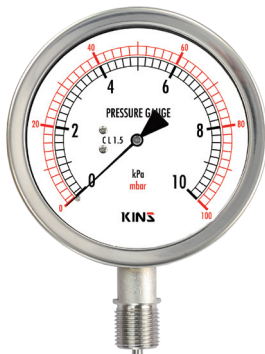


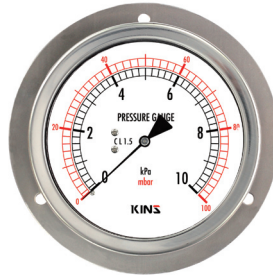
Special Low Pressure Gauge

Model No. **SS-3050S Series**

KINS



SS-3051S



SS-3054S

Summary

This gauge is specially designed to measure low pressure which cannot be measured by a bourdon pipe pressure gauge. This gauge uses a specially designed chamber as the element.

Safety Management

- Be sure to install a protecting device where exist abrupt change of pressure, vibration and pulsation.
- Do not give impact during the transportation, installation and usage.
- Be sure to install pressure gauge to be horizontal and vertical.

Purpose of Use

- Measurement of micro pressure which is for various uses
- Measuring by converting liquid level inside various tanks to pressure
- Measurement of pressure of various gas pipes arrangement

Production Specification

- ▶ **Diameter**
 - 75, 100, 150 mm
- ▶ **Accuracy**
 - $\pm 1.5\%$ of Full Scale
- ▶ **Working Pressure**
 - Static pressure : 75% of Full Scale
 - Fluctuating pressure : 60% of Full Scale
- ▶ **Working Temperature**
 - Ambient : $-20 \sim 65^{\circ}\text{C}$
 - Fluid : $-20 \sim 80^{\circ}\text{C}$
- ▶ **Degree of Protection**
 - IP65

▶ Range

75mm	– 5 kPa \sim – 50 kPa
	– 5+5 kPa \sim – 50+50 kPa 5 kPa \sim 50 kPa
100mm	– 2 kPa \sim – 100 kPa
150mm	– 1+1 kPa \sim – 50+50 kPa 2 kPa \sim 100 kPa

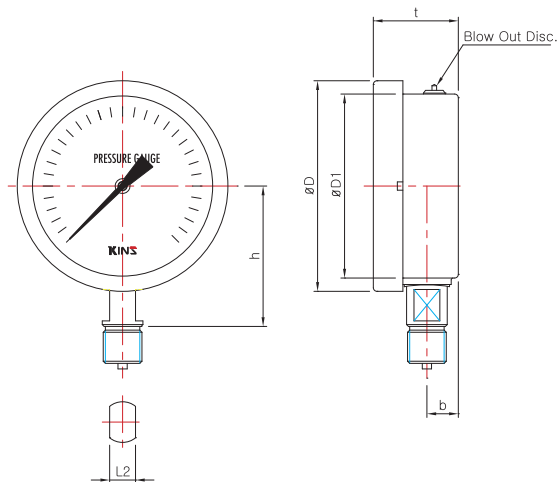
Product Specification

- | | | |
|---|---|--|
| <ul style="list-style-type: none"> + Case <ul style="list-style-type: none"> · STS 304 + Cover <ul style="list-style-type: none"> · STS 304 · Slip-on-Fit + Connection <ul style="list-style-type: none"> · STS 316 · PF, PT, NPT \leftrightarrow 1/4, 3/8, 1/2 + Window <ul style="list-style-type: none"> · Tempered safety glass, · Laminated safety glass | <ul style="list-style-type: none"> + Type <ul style="list-style-type: none"> · A-Type (Rimless type) · B-Type (Surface type) · D-Type (Flush mounting type) · BD-Type (Panel attachment type) + Pointer <ul style="list-style-type: none"> · Aluminum · Black coating + Dial <ul style="list-style-type: none"> · Aluminum · White color coating · black (kPa), red (mbar) gradation and characters | <ul style="list-style-type: none"> + Movement <ul style="list-style-type: none"> · Brass + Element <ul style="list-style-type: none"> · STS 304, STS 316 + Option <ul style="list-style-type: none"> · Accessories |
|---|---|--|

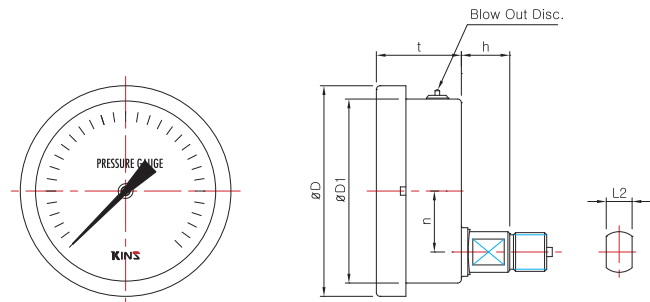
Special Low Pressure Gauge

Model No. **SS-3050S Series**

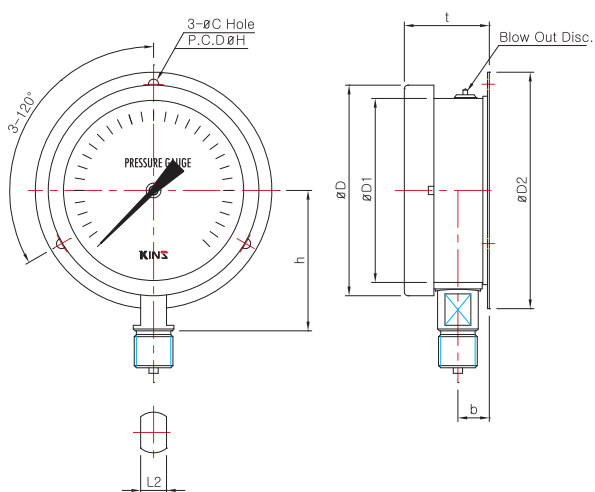
Model No. | **SS-3051S**
A Type (75, 100, 150mm)



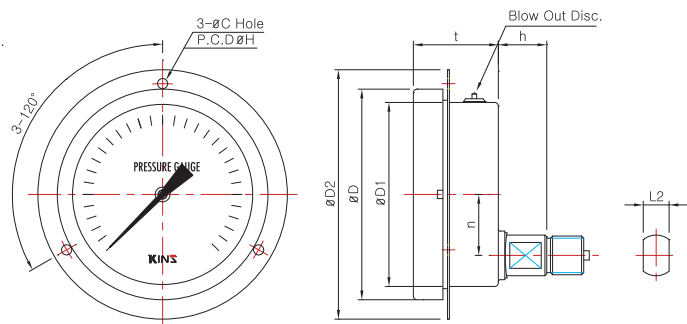
Model No. | **SS-3053S**
D Type (75, 100, 150mm)



Model No. | **SS-3052S**
B Type (75, 100, 150mm)



Model No. | **SS-3054S**
BD Type (75, 100, 150mm)



Dimensions (mm)

	Model No.	Conn'n (d)	ØD	ØD1	ØD2	b	n	t	L2	h	ØC	ØH
75mm	SS-3051S & SS-3052S	NPT & PT, PF 1/4	87	77	100	13	—	(40)	14	(58)	4.5	88
		NPT & PT, PF 3/8										
	SS-3053S & SS-3054S	NPT & PT, PF 1/4	87	77	107	—	22	(40)	14	(20)	4.5	97
		NPT & PT, PF 3/8										
100mm	SS-3051S & SS-3052S	NPT & PT, PF 1/4	114	100	128	13	—	(46)	17	(75)	5.5	115
		NPT & PT, PF 3/8										
		NPT & PT, PF 1/2										
	SS-3053S & SS-3054S	NPT & PT, PF 1/4	114	100	135	—	33	(46)	17	(25)	5.5	120
		NPT & PT, PF 3/8										
		NPT & PT, PF 1/2										
150mm	SS-3051S & SS-3052S	NPT & PT, PF 1/4	168	152	188	17	—	(50)	17	(100)	5.5	173
		NPT & PT, PF 3/8										
		NPT & PT, PF 1/2										
	SS-3053S & SS-3054S	NPT & PT, PF 1/4	168	152	188	—	33	(50)	17	(25)	5.5	173
		NPT & PT, PF 3/8										
		NPT & PT, PF 1/2										

*()The measurement in the blanket is approximate.

Pressure Gauge

Differential Pressure Gauge & Switch

Accessories of Pressure Gauge

Thermometer & Thermometer Switch

Thermocouple & R.T.D

Thermowell

Transmitter

Indicator etc.

Technical data