

Drilled type Thermowell

■ Select Basic Model Code

TWD	—	H	W0	S
①		②	③	④

Item	Descriptions			
① Thermowell type	TWD	Drilled type thermowell		
② Upper type	H	Hexagon	R	Round
③ Thermowell installation and type ※1 (referring the dimension)	W0	Welding 0	S4	Screwed + Lagging 2
	W1	Welding 1	F0	Flanged 0
	W3	Welding 3	F1	Flanged 1
	W4	Welding 4	F2	Flanged 2
	S1	Screwed 1	F3	Flanged 3
	S2	Screwed 2	F4	Flanged 4
	S3	Screwed + Lagging 1	F5	Flanged 5
④ Lower type	S	Straight	T	Taper

※ 1. W0 to W4 and F0 to F5 are round (R) upper type and S1 to S4 are hexagon (H) upper type.

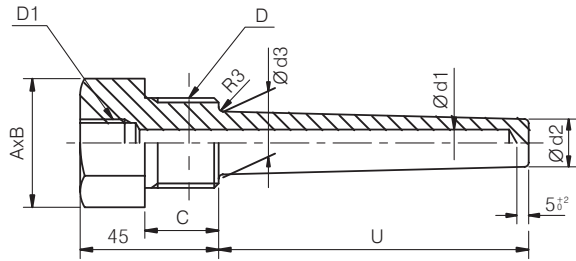
■ Select Thermowell Type

Select thermowell type (installation).

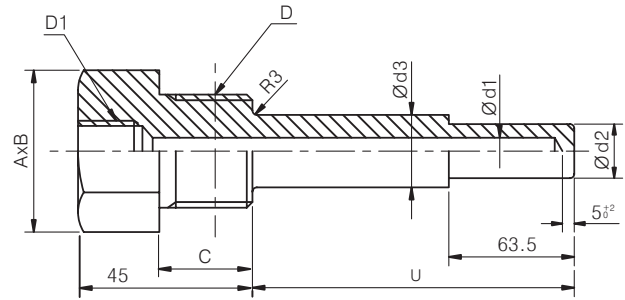
Welding 0 : TWD - R W0 T TWD - R W0 S	Welding 1 : TWD - R W1 T TWD - R W1 S
Welding 3 : TWD - R W3 T TWD - R W3 S	Welding 4 : TWD - R W4 T TWD - R W4 S

Drilled Type Thermowell

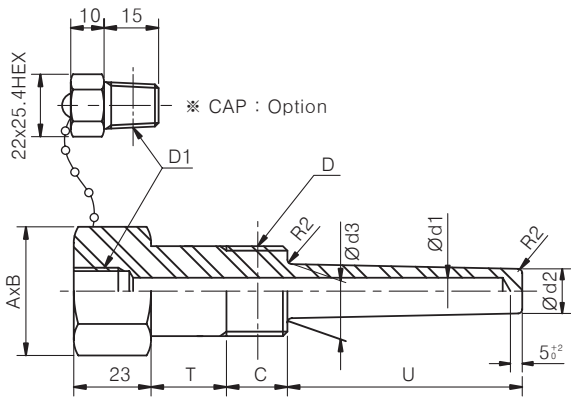
**Screwed 1 : TWD - H S1 T
TWD - H S1 S**



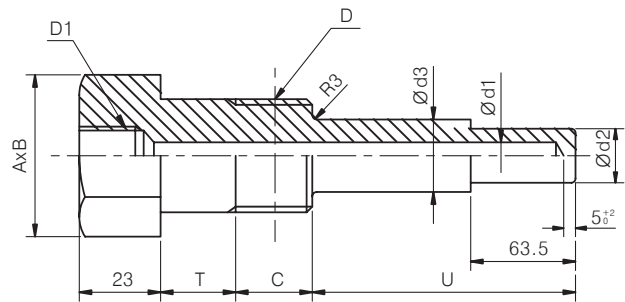
**Screwed 2 : TWD - H S2 T
TWD - H S2 S**



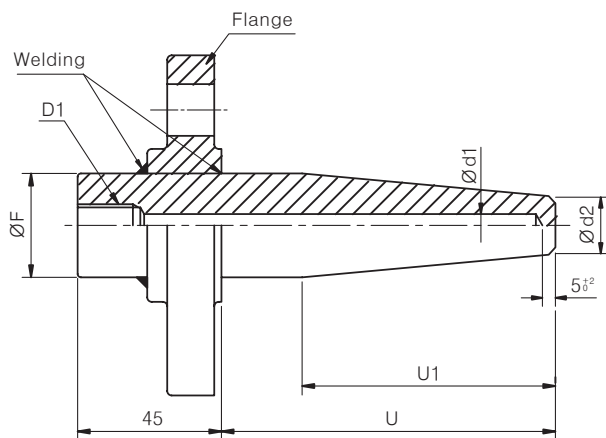
**Screwed + Lagging 1 : TWD - H S3 T
TWD - H S3 S**



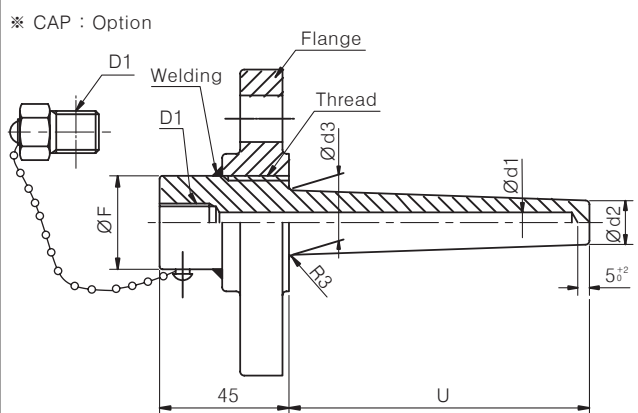
**Screwed 4 + Lagging 1 : TWD - H S4 T
TWD - H S4 S**

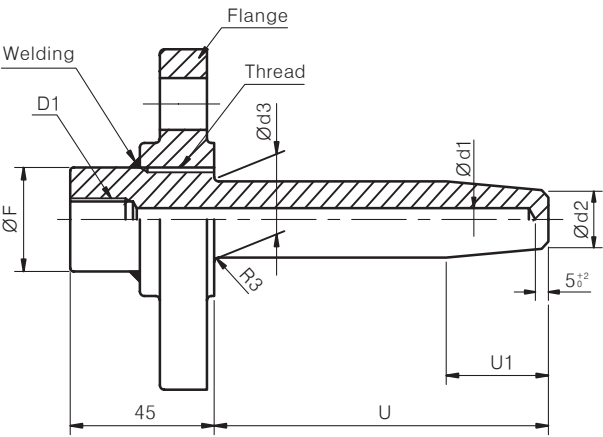
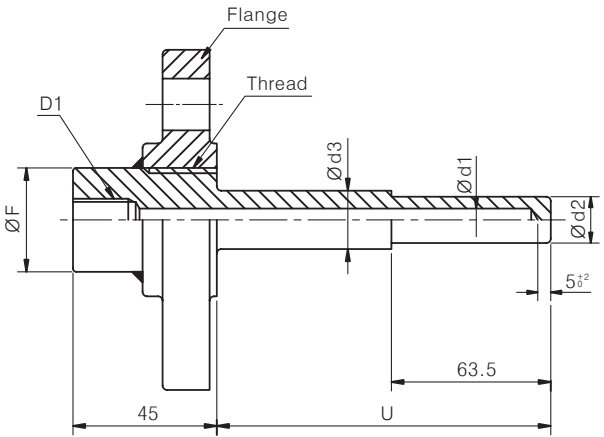
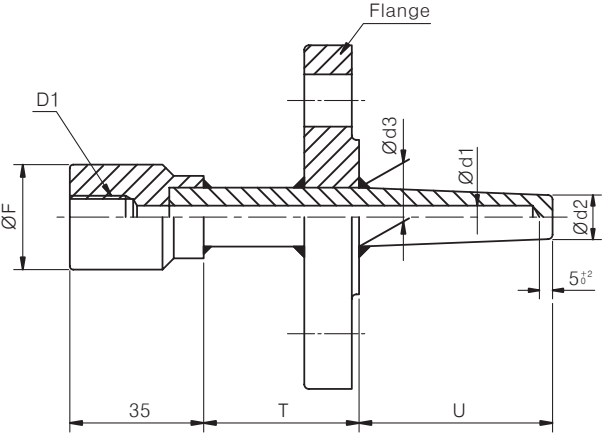
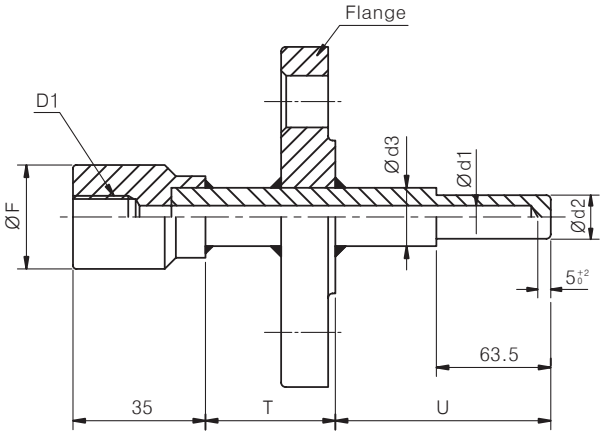


**Flanged 0 : TWD - R F0 T
TWD - R F0 S**



**Flanged 1 : TWD - R F1 T
TWD - R F1 S**



<p>Flanged 2 : TWD - R F2 T TWD - R F2 S</p> 	<p>Flanged 3 : TWD - R F3 T TWD - R F3 S</p> 
<p>Flanged 4 : TWD - R F4 T TWD - R F4 S</p> 	<p>Flanged 5 : TWD - R F5 T TWD - R F5 S</p> 


Drilled Type Thermowell

■ Ordering Code

Order code is basic model code + detailed specification.

■ Detailed specification

■ Detailed specification				Outer Diameter			Material	Inner Diameter		Cap	Thermowell length			Connection spec.											
TWD	-	R	F0	S	023	-	14	-	03	-	304	-	P1	-	07	-	Y	-	1000	-	100	-	045	-	J2010F304
※ For basic ordering code,				①		②		③		④		⑤		⑥		⑦		⑧		⑨		⑩		⑪	

※ For basic ordering code, refer to appearance or  Select Basic Code.

Item			Descriptions								
① Top outer diameter (ØF or A×B)	Round top (R)	W0 to W4	265	Ø26.5			480	Ø48			
			333	Ø33.3			600	Ø60			
		Others	320	Ø32			350	Ø35			
	Hexagon top (H)		H27	27×31.2			H50	50×57.7			
			H32	32×37			H70	70×80.8			
			H36	36×41.6							
② Bottom outer diameter (Ød2)			14	Ø14			17	Ø17			
			16	Ø16			19	Ø19			
③ Lower outer diameter (Ød3) ※1				Write directly.							
④ Material (metal)			304	304SS			321	321SS			
			316	316SS			446	446SS			
			36L	316LSS			50C	50Co-30Cr			
			310	310SS			INC	Inconel 600			
⑤ Upper inner diameter (ØD1)			P1	PT1/2			N2	NPT3/4			
			P2	PT3/4			F1	PF1/2			
			N1	NPT1/2			F2	PF3/4			
⑥ Lower inner diameter (Ød1)			07	Ø7			10	Ø10			
			09	Ø9			12	Ø12			
⑦ Cap			Y	Yes			N	No			
⑧ Lower length (U) (mm)				Write directly.							
⑨ Lower detailed length (U1) (mm) ※2				Write directly.							
⑩ Thermowell lagging length (T) (mm) ※3				Write directly.							
⑪ Connection spec.	Screw spec.			Write the code referring F-88 to F-89 page of Reference.							
	Flange spec.			Write the ordering code + flange material referring F-90 to F-93 page of Reference.							
		※ Flange material									
			304	304SS	316	316SS	36L	316LSS	310	310SS	
		446	446SS	50C	50Co-30Cr	INC	Inconel 600				

※ 1. In case of non-lower outer diameter (W0, W1, F0), write the code as " XX ".

※ 2. In case of non-lower detailed length (W□, S□, F1, F3, F4, F5), write the code as " XXX ".

※ 3. In case of non-thermowell lagging length (W0, W1, W3, S1, S2, F0, F1, F2, F3), write the code as " XXX ".

TWP Series

Select Basic Model Code

TWP	—	H	S1	S
①		②	③	④

Item	Descriptions			
① Thermowell type	TWP	Piped type thermowell		
② Upper type	H	Hexagon	R	Round
③ Thermowell type ^{※1} (referring the dimension)	C1	Screwed 1	D1	Flanged 1
	C2	Screwed + Lagging	D2	Flanged 2
④ Lower type	S	Straight		

※ 1. C1, C2 are hexagon (H) upper type and, D1, D2 are round (R) upper type.

Select Thermowell Type

Select thermowell type (installation).


Screwed 1 : TWP - H C1 S	Screwed + Lagging : TWP - H C2 S
Flanged 1 : TWP - R D1 S	Flanged 2 : TWP - R D2 S

■ Ordering Code

Order code is basic model code + detailed specification.

■ Detailed specification

■ Detailed specification												
				Material	Outer diameter	Thermowell length		Outer diameter	Inner diameter		Cap	Connection spec.
TWP - R D1 S				304	14	1000	045	023	P1	07	Y	J2010F304
				①	②	③	④	⑤	⑥	⑦	⑧	⑨
※ For basic ordering code.												

※ For basic ordering code, refer to appearance or  Select Basic Code.

Item		Descriptions							
① Material (metal)		304	304SS		321	321SS			
		316	316SS		446	446SS			
		36L	316LSS		50C	50Co-30Cr			
		310	310SS		INC	Inconel 600			
② Bottom outer diameter (Ød2)		12	Ø12		17	Ø17			
		15	Ø15		21	Ø21.7			
③ Lower length (U) (mm)			Write directly.						
④ Thermowell lagging length (T) (mm) ※1			Write directly.						
⑤ Top outer diameter	Round top (R) (ØF)	320	Ø32		350	Ø35			
	Hexagon top (H) (A×B)	H27	27×31.2		H50	50×57.7			
		H32	32×37		H70	70×80.8			
		H36	36×41.6						
⑥ upper inner diameter (ØD1)		P1	PT1/2		N2	NPT3/4			
		P2	PT3/4		F1	PF1/2			
		N1	NPT1/2		F2	PF3/4			
⑦ lower inner diameter (Ød1)		07	Ø7		10	Ø10			
		09	Ø9		12	Ø12			
⑧ Cap		Y	Yes		N	No			
⑨ Connection spec.	Screw spec.		Write the code referring F-88 to F-89 page of Reference.						
	Flange spec.		Write the ordering code + flange material referring F-90 to F-93 page of Reference.						
		※ Flange material							
		304	304SS	316	316SS	36L	316LSS	310	310SS
		446	446SS	50C	50Co-30Cr	INC	Inconel 600		

※ 1. In case of non-thermowell lagging length (C1, D1), write th code as " XXX " .