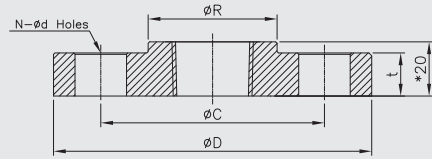
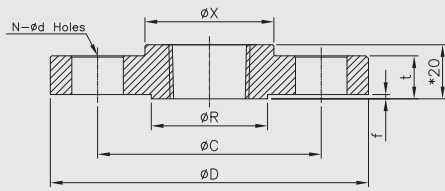
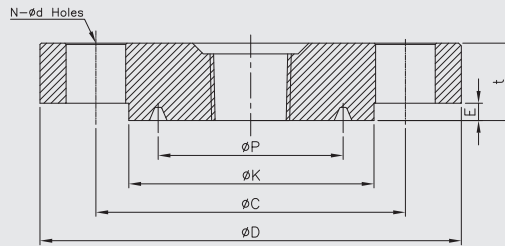


Standard product drawing (8/8)



* in case that thickness(t)
is less than 20mm.

"RF, FF" TYPE



"RTJ" TYPE

STD.	NPS	Class	D	C	R	K	P	E	F	X	t	f	N	d
ASME (RF, FF)	3/4"	150	100	69.9	42.9					38	13.2	2	4	16
	1"		110	79.4	50.8					49	14.7			16
	1 1/2"		125	98.4	73					65	17.9			16
	2"		150	120.7	92.1					78	19.5			19
	3/4"	300	115	82.6	42.9					48	16.3	2	4	19
	1"		125	88.9	50.8					54	17.9			19
	1 1/2"		155	114.3	73						21.1			22
	2"		165	127	92.1						22.7			8
	1"	600	125	88.9	50.8						24.5	7	4	19
	1 1/2"		155	114.3	73						29.3			22
	2"		165	127	92.1						32.4			8
	1"	900	150	101.6	50.8						35.6	7	4	25
1 1/2"	180		123.8	73						38.8	29			
2"	1500		215	165.1	92.1					45.1	8			25
ASME (RTJ)	1"	1,500	150	101.6		71.5	50.8	6.35	8.74		35	-	4	25
	1 1/2"		180	123.8		92	68.27	6.35	8.74		38.2			29
	2"		215	165.1		124	95.25	7.92	11.9		46			8
	1"	2,500	160	108		82.5	60.33	6.35	8.74		41.4	-	4	25
	1 1/2"		205	146		114	82.55	7.92	11.9		52.4			32
2"	235		171.4		133	101.6	7.92	11.9		58.8	8			29
JIS (RF, FF)	15A	10K	95	70	52					45	12	1	4	15
	20A		100	75	58					50	14			15
	25A		125	90	70					50	14			19
	15A	20K	95	70	52					45	14	1	4	15
	20A		100	75	58					50	16			15
	25A		125	90	70					50	16			19