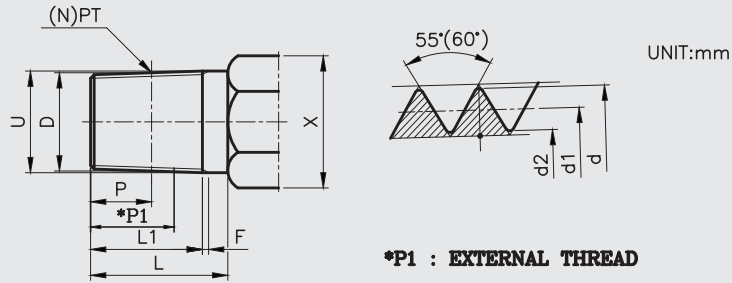
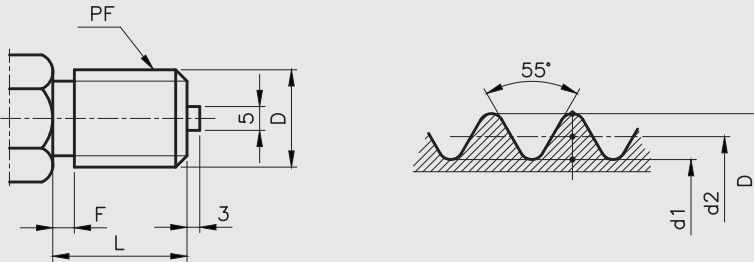


Standard product drawing (6/8)



		D	D1	P	L	n	d	d1	d2
NPT	1/8	7.938	7.142	4.064	12	27	7.938	7.142	8.566
	1/8	10.238	9.489	4.102	12	27	10.238	9.489	8.766
	1/4	13.716	12.487	5.786	14	18	13.716	12.487	11.314
	3/8	17.145	15.926	6.096	16	18	17.145	15.926	14.797
	1/2	21.336	19.772	8.128	18	14	21.336	19.772	18.321
	3/4	26.670	25.117	8.611	20	14	26.670	25.117	23.666
	1	33.401	31.461	10.160	22	11.5	33.401	31.461	29.694
	1 1/4	42.164	40.218	10.668		11.5	42.164	40.218	38.451
	1 1/2	48.260	46.287	10.668		11.5	48.260	46.287	44.520
	2	60.325	58.325	11.074		11.5	60.325	58.325	56.558
PT	1/8	9.728	9.147	3.97	12	28	9.728	9.147	8.566
	1/4	13.157	12.301	6.01	14	19	13.157	12.301	11.445
	3/8	16.662	15.806	6.35	16	19	16.662	15.806	14.950
	1/2	20.955	19.793	8.16	18	14	20.955	19.793	18.631
	3/4	26.441	25.279	9.53	20	14	26.441	25.279	24.117
	1	33.249	31.770	10.39	22	11	33.249	31.770	30.291
	1 1/4	41.920	40.431	12.70		11	41.920	40.431	38.952
	1 1/2	47.803	46.324	12.70		11	47.803	46.324	44.845
	2	59.610	58.135	15.80		11	59.610	58.135	56.656



		D	L	F	n	d1	d2
PF	1/8	9.728	14	2	28	8.566	9.147
	1/4	13.157	16	2	19	11.445	12.301
	3/8	16.662	18	2	19	14.950	15.806
	1/2	20.955	20	2.5	14	18.631	19.793
	5/8	22.911		3	14	20.587	21.749
	3/4	26.441	22	3	14	24.877	25.279
	7/8	30.201			14	27.877	29.039
	1	33.249	24		11	30.291	31.770
	1 1/8	37.897			11	34.939	36.418
	1 1/4	41.910			11	38.952	40.431
1 1/2	47.803			11	44.845	46.324	